

The Nautilus
1945

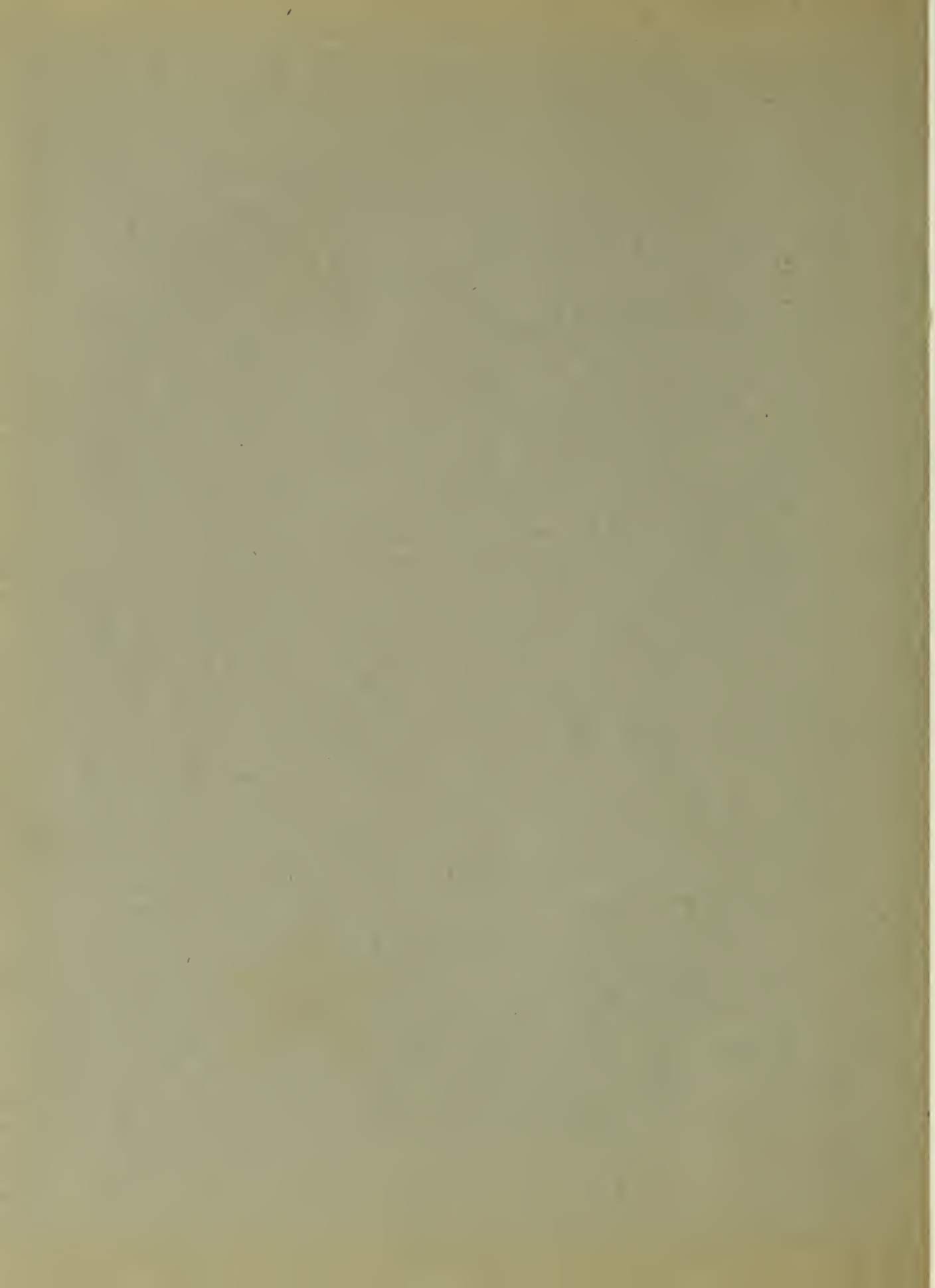
O H, for a booke and a shady nooke,
Eyther in doore or out,
With the greene leaves whispering overhead,
Or the streete cryes all about;
Where I maie reade all at my ease
Both of the newe and olde,
For a jollie goode booke whereon to looke
Is better to me than golde!



Ex Libris

MARY RUTHERFORD GAUTHIER







Digitized by the Internet Archive
in 2013



<http://archive.org/details/nautilus1945unse>



Nautilus

EASTERN NAZARENE COLLEGE
WOLLASTON, MASSACHUSETTS



per Ardua

Ad Astra

Foreword

The star symbolizes an unconquerable will to succeed. Throughout the ages it has drawn man upward and onward, through strife and toil, toward the high place for which his soul reaches. Today the dark veil of war which has covered us is rent by the first light of victory. We can glimpse the shining plains of Peace beyond. But they are for us only if we will continue to strive. Ours must be a united and a universal aim for which we will sacrifice unstintingly our own goals today in order that tomorrow may dawn triumphantly upon a world forever free.



Contents . . .

Faculty

Classes

Activities

Advertising



D e d i c

To You . . .

because you have made your life an untiring quest after the beauty of God's truth;

because of your consistent belief in the best in mankind, that ultimately he shall not fail in his struggle for the right;

because you have caught the vision of the star and have dedicated your life to the attainment of its reality,—to you,

Professor Mervel P. Lunn

we dedicate sincerely the Nautilus of 1945.

a t i o n

President's Message

Congratulations to the Class of 1945! You have been highly favored. It is always a privilege to attend college and an honor to arrive at the time of graduation, but you have been especially blessed. While others have been forced to give up their college careers or postpone their education indefinitely because of the stress of war emergency, you have gone through these war years undisturbed in the pursuit of your goal. Since your opportunities have been purchased for you by the sacrifices of others, tremendous responsibility is yours.

In the immediate future there will be days of long and arduous toil, days of difficult adjustments, days of unexpected emergencies. It is my earnest prayer that in your college years you have laid the foundation for a character strong enough to stand all tests, and that your training has prepared you both in mind and spirit to prove yourselves courageous men and women.

"The people that do know their God shall be strong and do exploits."

G. B. Williamson

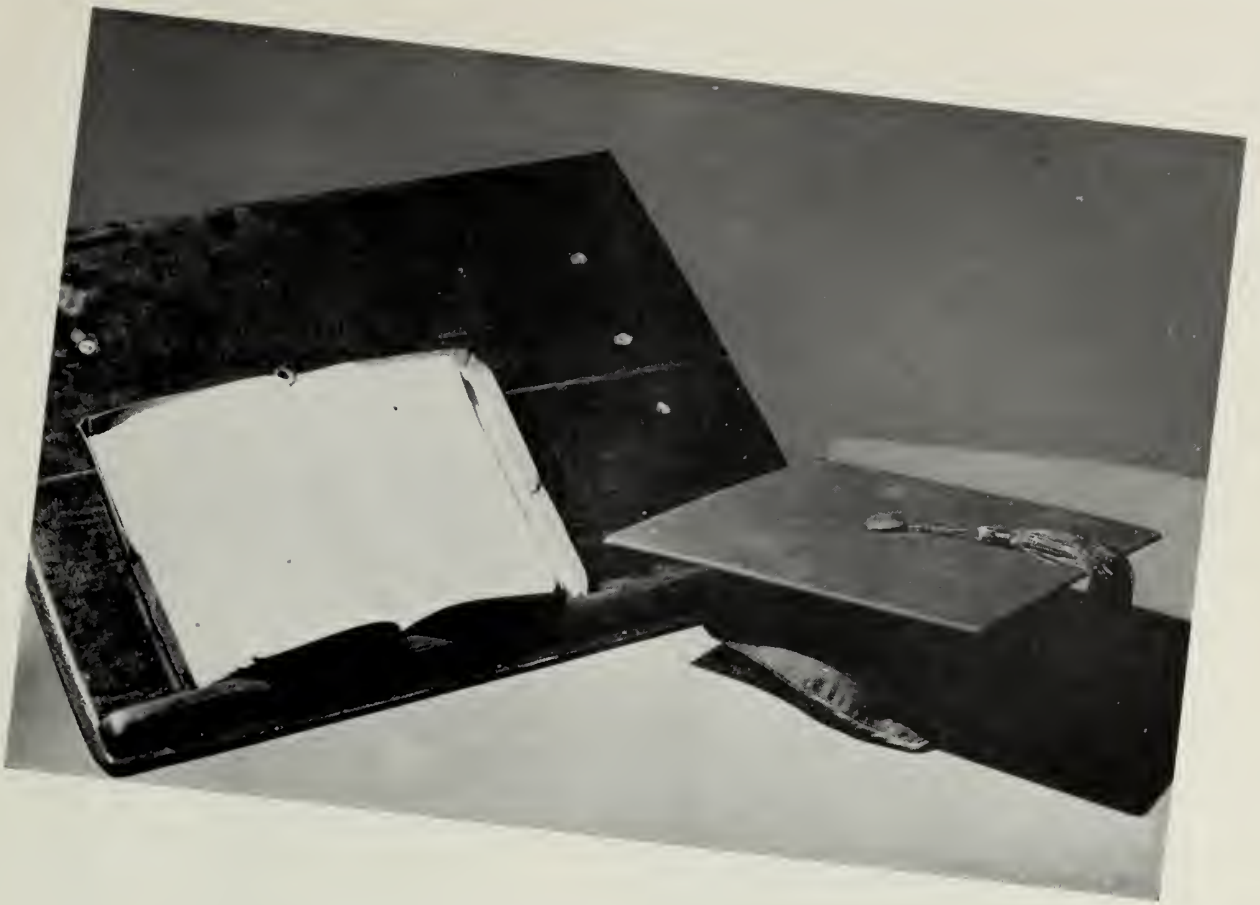


G. B. Williamson

President



ADMINIS



TRATION



GIDEON BROOKS WILLIAMSON, A.B., D.D.

President

"Strong to meet the foe—," he represents the dauntless determination and unswerving faith of the power of godliness. "Forward!" is his watchword and his battlecry. "From victory unto victory in the strength of the Lord."

EDWARD STEBBINS MANN, A.M.

Assistant to the President

The puzzle of managing college in war-time is only one of many diverse matters in which Professor Mann's cool thinking and courteous diplomacy solve problems successfully. E.N.C.'s "trouble-shooter," he's friend to all he meets.



BERTHA MUNRO, A.M.

Dean of College; Literature

If Dean Munro were the only professor, a college career at E.N.C. would still be a worthy preparation for life, because of her standards of Christian scholarship. In classroom, office, Sunday School, and home she manifests among us the spirit of Christ.

JAMES HOUSTON SHRADER, Ph.D.

Chemistry

A man with many irons in the fire, Dr. Shrader takes on more than he can do—and then does it! Active in increasing E.N.C.'s influence in the educational world, he is widely recognized as a Christian scholar and leader.



FRED JAMES SHIELD, A.M., Ed.M., D.D.

Psychology; Sociology

Dr. Shields impresses upon us the importance of living our Christianity before the world. Congenial and fatherly, this champion of the younger generation has firm faith in the future of the church.

SAMUEL YOUNG, A.M.

Theology

Simply, directly, persuasively, he tells us the truth about ourselves and makes us realize its significance. Keen insight into student problems and sympathy with the honest soul make Professor Young the ideal college pastor.



RALPH EARLE, JR., B.D., A.M., Th.D.

Biblical Literature

Dr. Earle's tendency to seek beyond the surface for depths of meaning marks the truly intellectual. Mingling practical advice to young preachers with stirring personal testimony, he measures every doctrine by the whole Word of God.

ALBERT FOSTER HARPER, Ph.D.

Philosophy

To prove that philosophy is practical, Dr. Harper guides the student in thinking his way to self-realization. Original suggestions for student activities make him a welcome participant in their affairs. True to his trust, he is diligent to perform God's bidding.





MARY HARRIS, A.M.

French, Spanish

Correlating literature with life. Professor Harris views human nature through the eyes of the masters. Gentleness of voice and manner bespeak inner tranquility and the peace of still waters. Her daily prayer is, "Make me a channel of blessing."



JASPER ROSS NAYLOR, B.S., A.M.

Dean of Men, Mathematics

Quietly Professor Naylor follows the pathway of duty, whether it leads to classroom, gymnasium, Dugout, or chapel. Patient, obliging, optimistic, he nurtures a strong mind in a strong body with a strong faith as his guide to truth.



EDITH FRANCES COVE, M.Music

Piano, Theory of Music

In Miss Cove's countenance shine youthful enthusiasm, vigor of purpose, and joy of living. She brings timely admonition on the wings of unfailing humor. Mistress of harmony and children's worker, she invests much in life and expects much from it.

ALICE SPANGENBERG, A.M.

English

Consistent, sensible, poised. Professor Spangenberg lives in the present, not unmindful of the past, but with an eye to the future. Putting first things first in a well integrated plan is the answer to her full program of Christian service.





KENT GOODNOW, A.M.

Classical Languages; German

Although Professor Goodnow knows all there is to know about the verb, and is ways delving into another language, we remember him also for his amusing chapel talks. His uncompromising ethical standards have provoked much thoughtful self-criticism.

WILLIAM JAMES VERNER BABCOCK, A.M.

Biology

Professor Babcock sees in nature the handiwork of God and in man a touch of the divine. Keenly aware of the value of the individual, he provides opportunity for student self-expression in his classes. Progressive and energetic, he gladly goes the "second mile."



AUDREY WILLIAMSON, A.M.

Speech

With keen insight into human nature and with abundant talent, Mrs. Williamson is able to interpret literature and music meaningfully. Aristocratic in her bearing, but democratic in her impartial friendliness, she is E.N.C.'s ideal "first lady."

VERNON THOMAS GROVES, A.M., Ph.D.

Education

As E.N.C.'s Sunday School promoter, Dr. Groves is unassuming, but tireless, methodical and dependable. Consistently obliging and loyal to duty, he combines the eye of the artist and cosmopolitan poise with genuine Christian character.





MERVEL LUNN, A.M.

History

An eager conversationalist, Professor Lunn combines acute interest in current affairs with a comprehensive knowledge of history. He cherishes the ideals of E.N.C. A life of service, intense passion for souls and a stirring testimony witness to his deep religious experience.

EVANGELOS SOTERIADES, A.M.

Librarian

No one would venture to estimate how many times a day Mr. Soteriades renders his accommodating service to students and faculty. His careful planning, tact, and ease in meeting problems make the library a real center of college life.



MADELINE NEASE, A.B.

Registrar

"She worketh willingly with her hands," manifesting fingertip efficiency amid confusion. The office is not her sole domain, however; 'tis rumored she is skillful in the culinary art. Deeply spiritual, Mrs. Nease has firm faith in the power of God.

ESTHER D. WILLIAMSON

Dean of Women; Voice

Realizing keenly her dual responsibility as teacher and Dean of Women, Mrs. Williamson endeavors to understand each student and her peculiar problem. A conscientious Christian worker, her talents completely consecrated, she is used of God to the blessing of many.





LOUISE DYGOSKI, A.B.

Speech

Miss Dygoski's quiet charm of voice and manners blend naturally with an alert efficiency in accomplishment. Students appreciate her patience in teaching and her individual attention. An earnest Christian, her testimony is a daily walk with God.

CAROL MADDOX, A.B.

Piano

Mistress of musical magic, Miss Maddox fills her position coolly, confidently, and serenely. Conversational flexibility and inner warmth make her the perfect hostess. Characterized by sweet dignity, she is dependable in responsibility and predictable in Christian conduct.



JUNE BECKWITH, A.B.

Piano

Even though Mrs. Beckwith has the added responsibilities of home and family, she has not ceased to appreciate and create beauty. Like her sensitive and deeply emotional nature her music is a heartfelt expression of her love of God.



EDITH PEIRCE GOODNOW, A.M.

English Literature

Mrs. Goodnow's thorough knowledge of literature has not made her a pedant, for she alternates teaching and homemaking with facility. Her interest in missions has resulted in several study books and in active church leadership.





KATHERINE ANGELL, A.B.

Secretary to the President

Cheerful in her efficiency, Mrs. Angell always has an infectious laugh ready to bubble to the surface. A New England reserve causes her unassuming quietness, but her firm convictions and her joy in the Lord are apparent to all.

LYAL CALHOUN, A.B., Th.B.

Academy Principal; History; Social Science

Retaining his own convictions and respecting others', our Academy principal is a co-operative individual. Clarity of thinking and forceful expression contribute to his leadership ability. Mr. Calhoun, always radiating a disarming friendliness, is a true lover of men and an active Christian.



ELIZABETH ZIMMERMAN, A.B.

Academy French; Latin

Self-confident but unaffected Miss Zimmerman leaves the impression of a breath of spring. Because of her wise sympathy and common sense she is a valuable friend. Living daily her Christian testimony, she is careful always to listen to the "still, small voice."



KATHRYN SCHURMAN AMOS, A.B.

Academy Mathematics

Tactful but firm as disciplinarian, thorough but considerate as teacher, Mrs. Amos is a valuable addition to E.N.C.'s library staff and academy faculty. Willing to carry more than her share of the load, she makes a fruitful Christian worker.





MARY MELLINGER, A.B.

Academy English

Newcomer to E.N.C., Miss Mellinger is a lover of books and people. We remember her for her friendly smile, her unobtrusive manner while living among us, and her strength of character, the result of an earnest Christian experience.

IRMA KOFFEL, A.B.

Bible History

"I'm ready! Are you?" Miss Koffel seems to say by the energy and challenge of her bearing. Consistently cheerful, her conversation is punctuated with irresistible mirth. With a tireless spirit and a sympathetic heart she is eager to "be about her Father's business."



GEORGE RICE, B.S.

Academy Science

Mr. Rice is one who teaches, studies, and works hard with no apparent effort. Paternal in his attitude toward E.N.C.'s younger generation, and always thorough, he successfully combines a scientific mind with the spirit of Christian love.



MARGARET DURKEE

Dietitian

Ration points and ceiling prices may worry Miss Durkee, but they never disturb her amazing efficiency. Her business sense, however, is softened by an earnest, home-like desire to "have things nice," and a humble spirit of working for Christ.



C L A S S



S E S



Grad

This year the graduate department was organized as a definite part of the college from which it derives its support. Tuition is free to E.N.C. alumni who are candidates for the degree of Bachelor of Theology.

It is expected that many ministerial students will wish to take advantage of the opportunities offered by the department, the inspirational lectures of Rev. Samuel Young, Rev. Harvey Blaney, and Dr. G. Frederick Owen, and the value of an extra year spent in the correlation of the knowledge necessary to future workers for the kingdom.

School

uate



D. Vaughn Clemans

William Cole

Donald Freese

Irving S. Jones

Irma Koffel



Alfred Mason

Mary Mellinger

George Rice

Rose Marie Salvia

Ernest Smith



Roland Stanford

William Summerscales

Helen Temple

Alexander Wachtel



SENIOR CLASS OFFICERS

G. Cross, Sawyer, Sickler, McKinney, A. Cubie.

Seniors

... "OH, catch the transient hour!" The last year went much too fast. Our most outstanding impressions are: making the freshies tremble at our dignity, the fun-packed week-end trip, and, climax, graduation. We've shared four wonderful years at E.N.C., and she has rewarded us with bright memories of friends and good times. Most important, however, is the firmly established faith in Christ that will integrate our lives.

HARVEY AMOS

A.B. Biblical Literature

E.N.C.'s ex-cowpuncher has become a careful student with a genius for detail. Serious even when he laughs or plays a game of basketball, Harvey has developed definite ideas from his experience. With genuine humility he appreciates his opportunity to prepare for the work to which God has called him.



RUTH BOYD

A.B. Biology

With a pert nurse's cap in view, "Bebe" has spent many an afternoon assisting in the biology laboratory. Her enthusiasm has found other outlets in sketching for programs, decorating the gymnasium, and guarding Betas and Gammas in basketball games. And, confidentially, she's an indefatigable tease!



ARABELLA BUNTING

B.S. Chemistry

A chemistry major demands many hours of work among Dr. Shrader's scales and test tubes, but Arabella has somehow found sufficient time to turn out sheets and shirts — free from "tattle-tale gray" — in the school laundry. In all her activities she has proved herself conscientious, faithful, and whole-hearted.





LUCILE CHATFIELD

B.S. Education

"Deadline" is not merely a word to Lucile; her *Camera* and *Nautilus* editors inform us unofficially that dependability is her middle name. Her wise choice of activities has included membership in both Psychology and Literature Clubs, giving her broad knowledge and experience for her future work as grade-school teacher.



E. GRANT CROSS

A.B. Philosophy

A good neighbor from the land of the maple leaf, Grant is always on the move—sinking a basket, weaving nets at the rope factory, or keeping the *Nautilus* out of a financial rut. Intensely interested in whatever he does, he is working persistently to fulfill his call to the ministry.



AGNES CUBIE

A.B. Literature

Variety is the word for Agnes—now she's lively Gamma cheerleader, energetic public speaker, sparkling hostess; now she's originating ideas for the senior class; now she presides with dignity over a Literature Club meeting. Petite but dynamic is the impression she gives. "Failure" is not included in her vocabulary.

DEWITT DICKSON

A.B. Theology

"Jack of all trades" is DeWitt, who is well known as super-salesman, nurse to invalid men and E.N.C.'s campus, chauffeur, and baker. His hearty enjoyment of living is as contagious as his laughter. DeWitt's John Knox call to Alaska is backed up by patience, unselfishness, and enthusiasm in new projects.



ROBERT EMMEL

A.B. Speech

Effervescent as a Bromo-Seltzer, Bob is always prepared to giggle, make an announcement, and recite in dialect. Although he likes to appear scatter-brained, he is really ultracourteous and thoughtful of others. Deeply sincere in his religious experience, he is eager to work in the vineyard of the Lord.



ALICE GEORGE

B.S. Education

"Little Curlylocks," long time famous for her high spirits, has made the amazing change to capable "school marm." Impulsive, active, and diligent, Alice does not want to miss one moment of life, but in her sudden, frequent moods of reflection, a wistful look shows that she strives for high ideals.





MERLE GRAY

A.B. Biblical Literature

A boyish giggle and cherub smile make Merle welcome whether as potato-peeler, master tree-surgeon, or N.Y.P.S song-leader. Always he has a minute to listen, sympathize, and help a friend. One who collects sermons as a hobby, he has a promising future as earnest and determined preacher-singer.



RUTH HEDBERG

A.B. Psychology

Sweet and gentle as a fragrant April shower, Ruth nevertheless maintains pronounced ideas and strong convictions. Gifted with a clear contralto voice, she has not hesitated to use this talent for Christ. Her consistent study has prepared her to teach; her consistent living has prepared her to meet the future with confidence.



VERNON JORDAN

A.B. Biblical Literature

Although somewhat reticent in public, Vernon becomes lively, even noisy, at home where he's "chief cook and bottle-washer." Maine is inescapable in his stubborn Yankee opinions and drawling speech. A brilliant student and faithful Christian, he has laid the foundation for an active, effective ministry.

PAUL MARSDEN

A.B. Biblical Literature

Stalwart New Englander with traditional accent and reserve, Paul is serious about life, but always optimistic. Whether playing his trombone, learning a Greek verb, or preaching the gospel, he strives to do all for the glory of God. A deep devotional life is the secret of his unwavering convictions.



BERYL MASON

A.B. Literature

Serious of tastes, Beryl has spent much of her college career filing cards, dusting books and squelching undue merriment in the library. She must have peered into many of those volumes, for the Honor Society found her an active member. Steady and true, Beryl makes her life a daily walk with God.



GOLDEN MAY

A.B. Public School Music

For the harassed kiddies of tomorrow who are condemned to the fate of music lessons, Golden's understanding of both music and people bodes only good. She is one who enjoys life, with its responsibilities as well as its fun. All who know her regard her as an accomplished person and a sincere friend.





JOHN MAYBURY

A.B. Biblical Literature

"Jack, be nimble" is the command this tall Pennsylvanian obeys as he crosses the high jump or shoots a basket. Smilin' Jack likes a practical joke and philosophy equally well. Quartet man who sings from "way down deep," he constantly pursues his call to spread the gospel of Christ.



NORMA McEDWARD

A.B. Biology

Whereas frogs and amoebae may startle the uninitiated, peering through microscopes by the hour has never disturbed Norma's sang-froid. Her education has not, however, been confined to the classroom. Norma's speed and accuracy have sunk many a basket, and her cheerful smile has obtained willing co-operation from all Betas.



KATHRYN MCKINNEY

A.B. Literature

Kay is our study in contrasts. Sometimes she grins mischievously, sometimes she works diligently on literature and *Camera* reports, but constantly she is leading others and devotedly serving her Master. A wholesome, optimistic outlook on life accounts for the happiness she finds in "just being alive."

DANA PAYNE

A.B. Literature; Modern Languages

The human paradox—simultaneously a Payne and a pleasure, Dana's personality is characteristic. Friend to many, but comrade of few, she maintains a certain reserve even on the basketball floor. Her real loves are books and music, of which she accepts only the best—symbolic of the high goals which dominate her life.



JANICE PERRY

A.B. Biology

"Jan" is one of those big surprises that come in small packages. On the basketball floor she's mistress of confusing, speedy tricks; in the biology lab she's a conscientious instructor and student. But wherever she goes, she's "a joy forever." Thoroughly consecrated, her life and talents are influencing others for Christ.



ROBERT RAPALJE

A.B. Biblical Literature

A bashful smile belies the strength of Bob's character, but from that shy reserve often flashes a surprising wit that makes him a welcome companion. One of the married seniors, he has worked hard and studied diligently. Already he is established in his pastorate, following the pathway of willing service.





ALLEN RICHARDSON

A.B. Theology

Quiet and retiring, Allen takes a common-sense attitude toward life and calmly accepts its challenge. His boyish chuckle and unfailing good humor make him an excellent host to his many friends. Not daunted by untoward circumstances, he has a vision of pastoral service wherever God may lead him.



ROBERT SAWYER

A.B. Philosophy

Gallant red-head of the Ambassador quartet, Bob is our idealistic lover of music, persons, and God. Persistent effort plus a natural ease has made him an accomplished speaker and leader. Domestic and particular, he's willing to take and give advice. His supreme consecration has made him determined to serve Christ fully.



RUTH SICKLER

A.B. Literature

Speaking her speech trippingly, Ruth has graciously fulfilled many requests for readings at parties and programs. With unruffled dignity she has assumed leadership, and with efficiency she has performed her daily tasks, thus developing a pleasing combination of common sense and correctness that gives her life balance and direction.

IRENE WILLWERTH

A.B. Biology

A+ is Irene's grade for Efficiency, as all who have worked with her throughout her college career, will testify. Behind that studious industry lies an unfathomed capacity for fun. Already initiated into the techniques of teaching botany and zoology, Irene is assured a successful future as a science teacher.



AUSTIN WRIGHT

A.B. Theology

With an explosive and expansive grin, Austin has always been a welcome friend, even though he is a tease. His versatility as an athlete extends to accomplishments with the tee and putter. Philosophically-minded, he is an optimistic realist about the problems of the future and he is consecrated to his "reasonable service."



WILLIAM ECKMEYER

A.B. Theology

"A sound mind in a sound body," said Juvenal, and obviously he was referring to Bill. With a thoroughly composed outlook to guide his work and fun, he leads a serene and complete life. We predict that he will be a kindly shepherd to his people in his future pastorate.





JUNIOR CLASS OFFICERS

Second Row: Curry, M. Richey, R. Hawk.

Front Row: Grosse, Dunlap.

Juniors

*B*elated scholastic problems worry the juniors, causing them several sleepless nights and many anxious recounts of credits and quality points. But there's plenty of time for delicious chicken dinners! Secrecy is the watchword of this class, deep in plans for banquets, outings, dresses, and other Junior-Senior Day projects. Keep up the spirit, Juniors. Your turn is coming!

FRANCES ALLEN

"Along the cool, sequestered vale of life
She kept the noiseless tenor of her way."



MARIE AUSTIN

"— of still and serious thought."

BEULAH BOWEN

"Sing a song of sixpence."



HELEN BRICKLEY

"She with sunny floating hair."

LOUISE BROWN

"The incurable itch of writing possesses her."

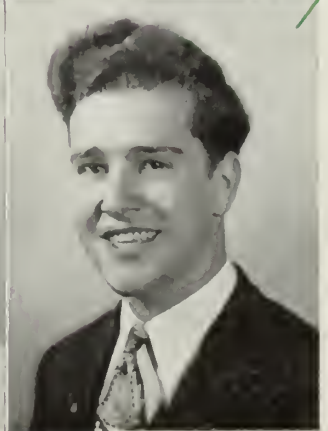


AGNES BROWNE

"This above all;
To thine own self be true."

DOROTHY BRYNER

"A true friend is forever a friend."



RAY CHARRETTE

"Myself when young did eagerly frequent
Doctor and saint, and heard great argument."

ROBERT CLIFFORD

"His music in my heart I bore
Long after it was heard no more."

MARY COFFIN

"She goeth forth unto her work and to her
labor until the evening."

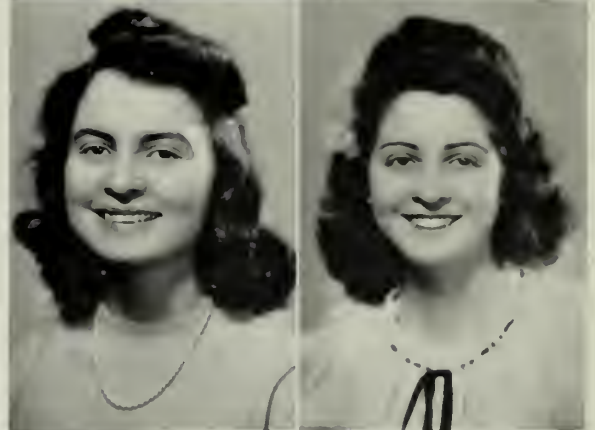


HELEN CONSER

"Her voice was ever soft, gentle, and low."

IRMA CRUTCHER

"Her very frowns are fairer far
Than smiles of other maidens are."



EDWARD DELL

"— occasional flashes of silence that make
his conversation perfectly delightful."

WALLACE DIXON

"Who mix'd reason with pleasure, and wis-
dom with mirth."



MARGARET DUNLAP

"A merry heart maketh a cheerful counten-
ance."

EUNICE GROSSE

"Though I am always in haste,
I am never in a hurry."



JUNE HAMILTON

"There is music wherever there is harmony."

CARL HARR

"Every man hath his fault,
And modesty is his."

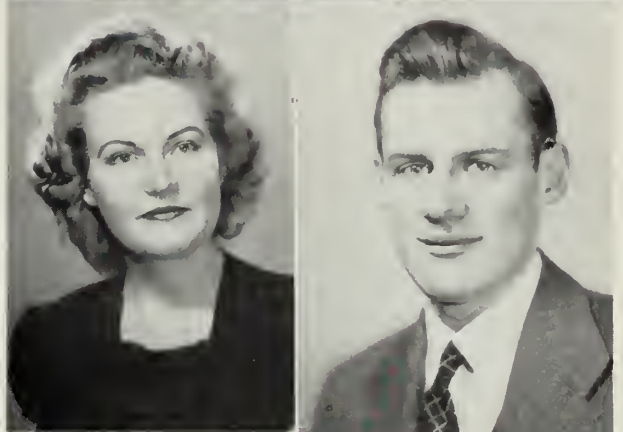


MARY HARRIS

"A little nonsense now and then
Is relished by the wisest men."

RICHARD HAWK

"Speak the speech, I pray you,
Trippingly on the tongue."



OLIVER KARKER

"Genius is the capacity for evading hard
work."

MURIEL LANPHER

"To love the game above the prize."



MURIEL LARRABEE

"A merry heart doeth good like a medicine."

WILLIAM LUTTON

"He works for the joy of working."



GORDON MALONY

"I'm not a politician, and my other habits
are good."



FREDA McKITRICK

"Thy gentle words are drops of balm."

FLORENCE MITCHELL

"We wear a face of joy,
Because we have been glad of yore."



MIRIAM PARK

"The secret of success is constancy to purpose."

IRENE PLANT

"O happy race of men, if love which rules
heaven rule our minds."



MYRON RICHEY

"My idea of an agreeable person is a person
who agrees with me."

MARY SHIELDS

"Welcome ever smiles."



LOUISE SHOFF

"Joy is the sweet voice."

ROY SLICK

"When people's ill, they comes to I."



ASTRID SMITH

"Strong is her soul, and wise and beautiful."

EDWARD THOMAS

"Laugh, and the world laughs with you."



JUANITA THORP

The word for me is Joy."

JEAN THORNE

"Kind hearts are more than coronets."



CORNELIUS WHETSTONE

"That which he has done is but earnest of the things that he shall do."

GRACE WHITE

"Studies serve for delight, for ornament, and for ability."



ELIZABETH PARKER

"Smiling always with a never-fading serenity of countenance."



SOPHOMORE CLASS OFFICERS

Greene, J. Smith, P. Moore, P. Andrews, W. Taylor.

Sophomores

Our sophomore year began with a bang at frosh initiation, and continued its eventful program to the end. We are a social crowd, going all out for sports, clubs, or post-study hour feasts and fests. After all, only upperclassmen grind! This is the year we form a real class, taking part in activities, and becoming true E.N.C.ers.

Lee Allison

Esther Anderson

Paul Andrews

William Ardrey

Ruth Bass

Myrtle Bastedo

Paul Berk

Joseph Biscoe

Luke Brinker

Evelyn Brown

Alberta Cameron

Marcia Carlson



Maude Cochran

Vivian Coffee

Peggy Congalton

Thora Cross

Vernon Curry

Maxine Davidson

Leland Davis

Pauline Douglas

Viola Doverspike

Eleanor Emery

Esther Friend

Irma Gale





Virginia Greene

Patricia Herrschaft

Gilbert Hilgar

Ellis Horton

Theda Jones

Anna Mae Keffer

Vanetta Kerling

Richard Lewis

Betty Macomber

Walter MacPherson

Helen Marta

Bernadine Moberley

Lawrence Moore

Paul Moore

Vivian Musnug

Charles Muxworthy

Howard Olson

Jay Patton

Harriet Plyler

Rowland Prouse

Dorothy Reed

Elizabeth Smith

Janet Smith

Alma Swenk





William Taylor

Irene Van Dresser

Louise Webster

Erlaine Weaver

Dorothy Wells

Oliver Williams

Jean Wood



FRESHMAN CLASS OFFICERS

*Second Row: Churchill, Parry, Pennypacker.
Front Row: Hodges, Van Dresser.*

Freshman

“*H*ope springs eternal”—in the freshman heart. Somehow there is something contagious in the spirit of enthusiasm and good fun which pervades these newest strugglers with rhetoric and history. Class of 1949, rushing to the Dugout, making new friends, meeting and overcoming all obstacles with triumphant faith, we salute you!

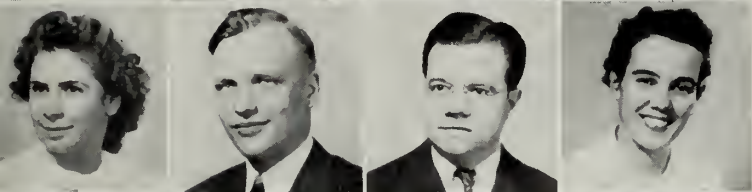


George Abersold

Doris Adsit

David Aldridge

Violet Balwit



Ruth Bee

Eugene Benson

James Benton

Jane Bishop

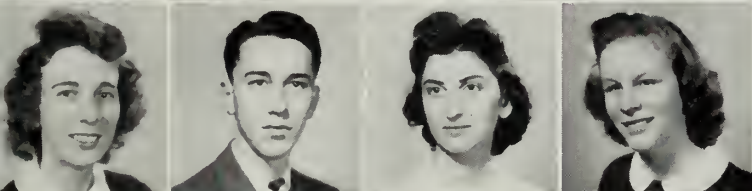


Mary Boggs

Laura Boyd

Barbara Brooks

Joyce Brooks

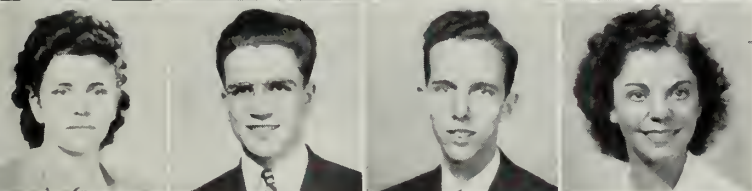


Ruth Brown

Roy Carnahan

Nevart Chetakian

Margaret Christensen



Olive Church

Clarence Churchill

Paul Clark

Jean Cline

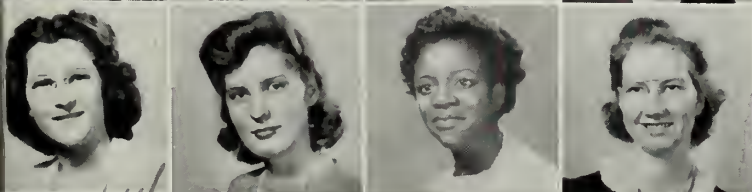


Thelma Cody

Esther Colby

Ruth Collins

May Cornell



Ruth Corrie

Grace Crutcher

Lucille Deans

Harriett Dickinson



Margaret Dickinson

Betty Dickson

Gloria Dittrich

Esther Dixon

Elsie Dodd

Jean Dorothy

Viola Eshleman

Margaret Ewing



Mary Jane Ewing

Norma Feiten

Helen Falke

Catherine Finch



Dale Galbraith

Betty Gracey

Ruth Graham

Elaine Hall



Laverne Ham

Betty Hansrote

Margaret Harbula

Ruth Harding



Christine Hardy

Mary Belle Harris

Paul Harris

Priscilla Harvey



Grace Hawk

Lois Haylett

Catherine Haylett

Daniel Hazelton



Vivian Hess

Opal Hickerson

Grace Himmeger

Ida Hobart



Barbara Hodges

Betty Hopkins

Ruth Howe

Marjorie Hurlbutt





Geneva Hutton

Betty Johnston

Robert Jones

Sylvia Jordick

Dorothy Kitfield

Marjorie Kline

Barbara Lahue

Ruth Larson

Margaret Lemon

Ruth Leonard

Doris Lingford

Paul Lockhart

Sylvia Lunn

Elizabeth Lyons

Eunice MacPherson

Muriel Main

Cedric Manley

Myrtle Mason

Kathryn Mauger

Doris McCusker

Anna McElhenney

Mary Melnick

Helen Newton

Naomi Newton

Martha Park

Harold Parry

Luther Pennington

Wilbur Pennypacker

Elva Pettit

Erman Rearick

Donald Reed

Betty Richey

Cuba Roberts

Frances Rogers

Eileen Scott

John Scott



John D. Scott

Dorothy Shedd

Vivian Shollenburger

Thelma Shuman



Vera Simms

Keith Smith

Rolland Smith

Pauline Snearley

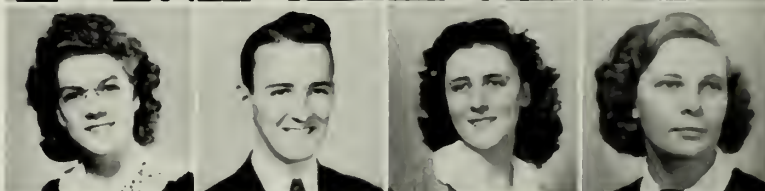


Estella Sprow

Conard Stairs

Helen Steiner

Marilyn Stiles



Betty Stone

Leroy Sturtevant

Mary Sumner

Lila Taylor

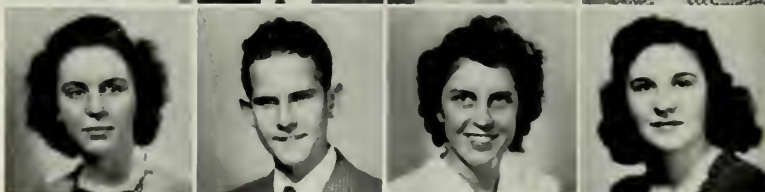


Louise Teague

Eugene Terwilliger

Olga Thomas

Dolores Traverse



Anna Trimbath

Marion Turkington

Betty Turner

Mabel Tustin



Grace Umstead

Alice Unterzuber

Robert Utter

Audrey Ward





Alma Washburn

Margie West

Ruth Wilson

Emma Wooledge

Florence Wright

Paul Yamada

Luella Clemons

Pearl McKenney

Robert Jessell

Charles Coller

Gladys McIlwain

Dudley Hathaway

Special Students



Harry Bansmere

Sara Cooper

Lois Foster

Betty Fullerton

Mary Higgins

Katherine Kauffman

Jean Nesmith

Vera Palmer

Ruth Patton

Rita Rosenhammer



Myra Ross

Eleanor Sunberg

Dove Tidball

Seth Tidball

Julia West

Betty Widowsky

Academy Students



T. Huna, Russell Naylor, B. Huna, G. Andrews, J. Dell

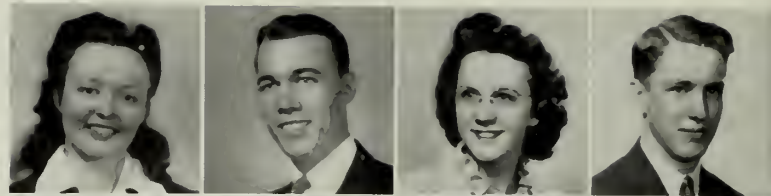
The Eastern Nazarene Academy, directed by Mr. Lyal Calhoun, has established a curriculum which gives adequate preparation for entrance to the college. This year, the registration totaled seventy students, thus forming a compact organization of young people of the same age group, which insures companionship and participation in activities equivalent to those offered by high schools. The Academy is unique, however, because it also provides Christian surroundings and standards which influence deeply the future life of the young person.

Dorotha Achhammer

Paul Achhammer

Irene Allen

George Andrews



Doris Armstrong

Erma Blaugher

Bernice Boozell

Shirley Braley

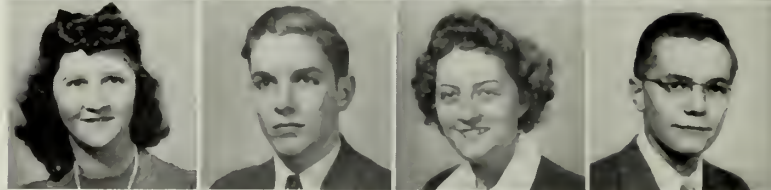


Sarah Brickley

Robert Brocksopp

Pauline Brunell

Marvin Burkhardt

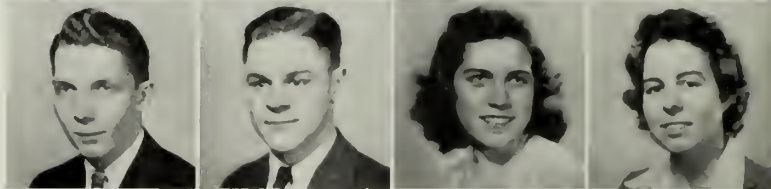


Ray Carpenter

Ralph Crispell

Catherine Cubie

Evelyn Davis

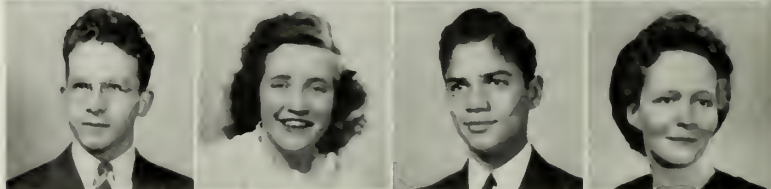


Jack Dell

Beatrice DeVaul

Frank Domingues

Leora Eastman



Pauline Elliot

Marion Flueck

Florence Freeh

Merlva Giuliano

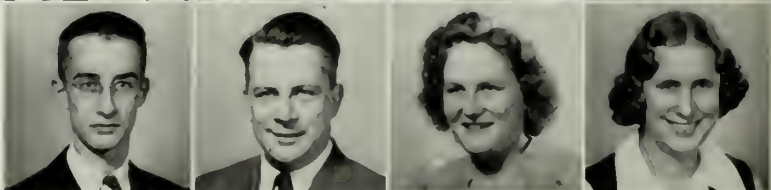


Robert Goodnow

Harold Gould

Matie Hammond

Carrie Hilsinger



Betty Huna

Theodore Huna

De Rand Jones

Joseph Jones





George Joudrey

Louise King

Edith Lassi

John Mansfield

Edith Marz

Joy Matthews

Victor Matthews

Phyllis Mundy

Alice Michæls

Jean Naylor

Hilda Morris

Peggy Pangle

Shirley Pollard

Eugene Rice

Albert Rich

Sophie Riley

Arlene Seitz

Nancy Simmons

Harvey Tracey

Everest Thurber

Mildred Tullis

Glenna Wool

Joseph Talley

Carl Boyd

Budd Rice

Donald Slocum

Frank Randall

Frank Rapisarda

Barbara Greene

Laura Northcott

Marion Best

Robert Russell



A C T I V



I T I E S

The Student



Edward Dell

EDWARD DELL	<i>President</i>
DANA PAYNE	<i>Vice-President</i>
IRENE WILLWERTH	<i>Senior Representative</i>
WALLACE DIXON	<i>Junior Representative</i>
PATRICIA HERRSCHAFT	<i>Sophomore Representative</i>
LUTHER PENNINGTON	<i>Freshman Representative</i>
DONALD FREESE	<i>Graduate Representative</i>
JACK DELL	<i>Academy Representative</i>
MYRON RICHEY	<i>Representative-at-Large</i>
JAY PATTON	<i>Representative-at-Large</i>
DR. ALBERT F. HARPER	<i>Faculty Representative</i>

Council

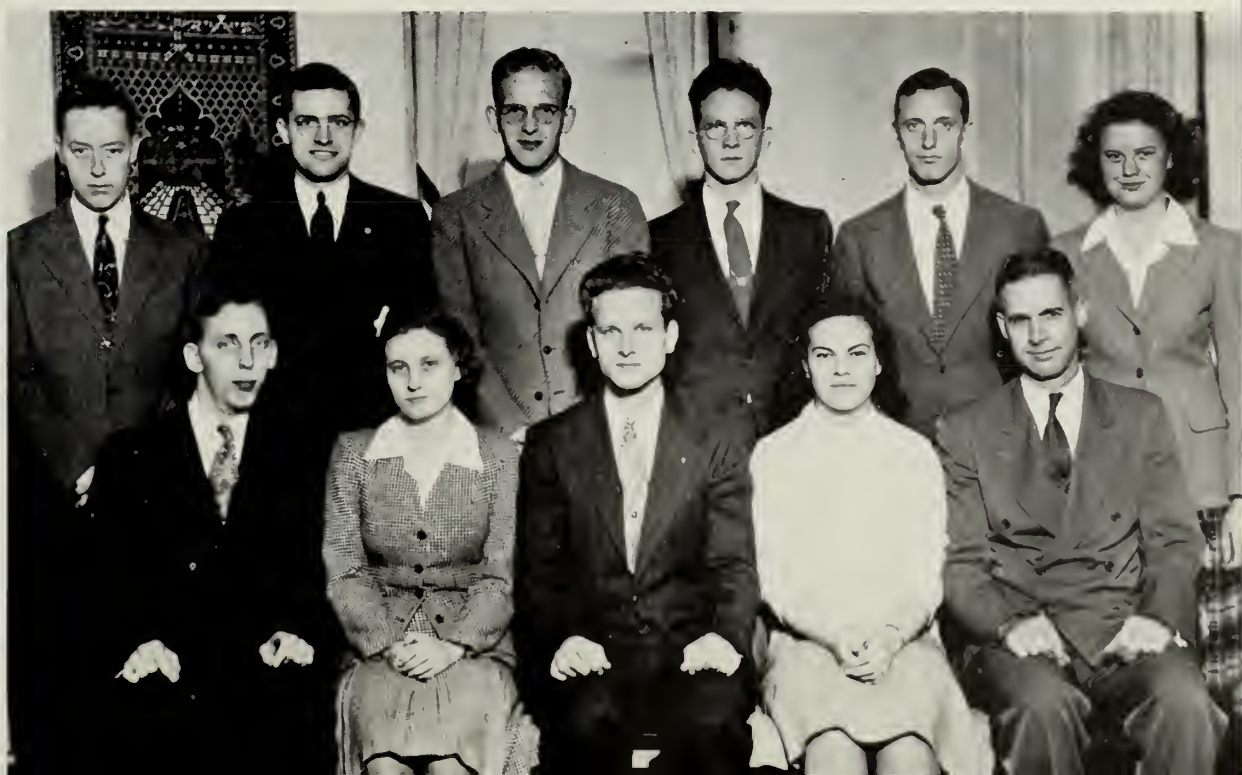
Representing the entire student body of Eastern Nazarene College, the ten members of the Student Council have tried to evaluate suggestions justly, and offer definite methods of improving campus life.

In the effort to aid E.N.C.'s servicemen, the Council presented inspiring chapel services, and sponsored an enthusiastic drive for financial contributions, religious literature, and blood plasma. Also, they added over fifty names to the Honor Roll.

With the hope that it would become an annual practice, this year's Council offered, for the first time, beneficial classes for training officers of campus organizations.

In its chapel services the Student Council has attempted to create a more intense realization of the responsibilities implied by "school spirit" and student government. Keeping the students' wishes and ultimate benefit in mind, the Council has provided capable leadership throughout the college year.

*Second Row: M. Richey, J. Patton, Freese, J. Dell, Pennington, Herrschaft.
Front Row: W. Dixon, Willwerth, E. Dell, Payne, Professor Harper.*





*Second Row: Chatfield, McCusker, M. B. Harris, Carlson.
Front Row: J. Dell, P. Herrschaft, Browne, G. Cross, Payne.*

The Nauti

AGNES E. BROWNE
 PATRICIA HERRSCHAFT
 F. GRANT CROSS
 JACK DELL
 DANA PAYNE
 ROY SLICK
 WILLIAM COLE
 EDWARD DELL
 MIRIAM PARK
 LUCILE CHATFIELD

Editor-in-Chief LOUISE BROWN
Associate Editor DORIS McCUSKER
Business Manager MARCIA CARLSON
Assistant Business Manager MARY B. HARRIS
Literary Editor ALMA SWENK
Sports Editor ALICE GEORGE
Photography Editor CUBA ROBERTS
Make-up Editor PROFESSOR MUNRO
Staff Writers PROFESSOR MANN

Typists

Faculty Advisers

This is your own E.N.C. in these pages—as she is, as you will remember her when you look back upon your four priceless years of college.

E.N.C. means memories of a moment of prayer before class or a game, professors and students who are living for the highest goals, cherished friendships; of laughter in the dormitory halls, sportsmanship in games; of such indescribable things as the touch of spring upon the campus after a New England winter. All these are captured for you in the *Nautilus* to make a record treasured by every alumnus.

lus - 1945



Agnes E. Browne
Editor-in-Chief



F. Grant Cross
Business Manager

With the attainment of All-American rating from the National Scholastic Press Association to spur him on, Editor Wallace Dixon made this year's *Campus Camera* an even better publication. Effective editorials and commendable punctuality have made the *Camera* a top-notch paper.

William Summerscales' religious column, "Seek Ye First," was inspiring and helpful; Dana Payne's "Mightier Than The Sword" kept us enlightened about the best in current literature; and Eddie Dell's "Candid Camera" viewed interesting and significant campus events.

Not unmindful of our debt to the former E.N.C. fellows who are now in the service of our country, the *Camera* printed in every issue excerpts from their letters, compiled an informative survey of their opinions, and often included interviews of servicemen visiting E.N.C. on furlough.

Looking to the future, the *Camera* brought us our first view of the proposed E.N.C. campus twenty years hence.



Wallace Dixon

The



Third Row: M. Harris, Coffee, Charrette, T. Huna, Curry, Summerscales, Terwilliger, J. Dell, E. Dell, Domingues.
 Second Row: J. Smith, Chatfield, Plant, Lanpher, George, Thorp, Carlson, Payne, Crutcher, Cornell, Herrschaft, Swenk, P. Moore.
 Front Row: Slick, Biscoe, W. Dixon, Professor Spangenberg, McCusker, Yamada

WALLACE C. DIXON
 JOSEPH BISCOE
 PATRICIA HERRSCHAFT
 ROY SLICK
 MURIEL LANPHER
 WILLIAM SUMMERSCALES
 DANA PAYNE
 EDWARD DELL
 EUGENE TERWILLIGER
 IRENE PLANT
 ALMA SWENK
 LUCILE CHATFIELD
 JANET SMITH

Editor-in-Chief
Assistant Business Manager
Feature Editor
Sports Editors

Columnists

Circulation Manager
Reporters

JUANITA THORP
 MARCIA CARLSON
 PAUL MOORE
 MARY E. HARRIS
 VIVIAN COFFEE
 JACK DELL
 ELLIS HORTON
 NORMA FEITEN
 ALICE GEORGE
 MAY CORNELL
 GRACE CRUTCHER
 SYLVIA JORDICK
 PROFESSOR SPANGENBERG

Secretary
Typists

Faculty Adviser

Campus Camera



*Third Row: Hansrote, Muxworthy, R. Jones, Carnahan, Galbraith.
 Second Row: Stone, Lingford, Van Dressar, Eshleman, Deans, Harbula.
 Front Row: Cornell, Turkington, Sumner, Miss Spangenberg, Colby, L. Boyd, Feiten.*



Jay Patton

Having carefully examined their Greek lexicons, the Alphas decided that the most appropriate slogan for them was "Begin with Alpha!" Accordingly, a gigantic clock solemnly ticked away the moments of Rush Day and, incidentally, attracted the largest number of new students to Alpha ranks.

Time turned backward in its flight as Sigma Delta Alpha presented its program of music by Stephen Foster, with Richard Hawk as narrator. The group also held an ice-skating party during the winter.

Alphas chose Jay Patton as their president, Ray Charrette as vice-president, Florence Mitchell as secretary, and Virginia Greene, treasurer.

Sigma Delta Alpha

Greenbook

Peering into the future is no longer left to aged seers; the staff of the *Greenbook* of 1945 has chosen as its theme a prophetic panorama of the postwar world. The theme, features, and art work combine to point out new global relationships, characteristics, and influences on home life, education, and industry.

The religious phase appears in the description of the plans for the sweeping missionary movement that evangelistic Christians are now planning. In accordance with this emphasis the staff has dedicated the book to the Reverend Samuel Young, college pastor.

Published annually by the freshman rhetoric classes, the *Greenbook* this year has been prepared by Mary Sumner, editor-in-chief; Robert Jones, business manager; and a large staff.



Mary Sumner

- Fifth Row:* Muxworthy, Carpenter, Slick, Goresh, R. Hawk, W. MacPherson, G. Andrews, J. Dell, Lutton, Harr, Tracey, Berk, E. Dell, Sawyer, Jordon, Rich, M. Richey, Stairs, Chase.
- Fourth Row:* Abersold, P. Andrews, Carnahan, Clifford, Riley, Marz, King, R. Boyd, Crutcher, R. Patton, Hansrote, Lassi, Dittrich, Harvey, Flueck, Matthews, Pangle, Wool, Joudrey, Matthew, Crispell.
- Third Row:* Hammond, Pollard, Devaul, A. Smith, Larrabee, B. Richey, Friend, Hedberg, Brunell, Bee, Larson, Rogers, Musnug, Howe, Main, Davidson, Elliott, L. Taylor, Hobart, Doverspike, Turpel.
- Second Row:* M. West, J. West, McKinney, Plante, Bunting, Colby, Greene, Unterzuber, Widowsky, McIlwain, Roberts, Lyons, Huna, Plyler, Himmegar, Adsit, Newton, Chatfield, Brown, Mobberley, Macomber.
- Front Row:* Bishop, Carlson, Hutton, Dickson, E. MacPherson, Balwit, Van Dresser, Hardy, Turner, Johnston, J. Patton, George, Professor Naylor, Mitchell, Charrette, Thomas, Marta, White, Mundy, Blaughter, Freeh, Guihano, Salvia, Lann, Best, Woledge.



Sigma Delta Beta



Norma McEdward

The Parisian Arc de Triomphe has nothing on the Triumphal Arch that the Betas erected for their Rush Day theme of "Victory with the Betas."

"Tell it or else," presented by B.B.C. (Beta Broadcasting Company), with Alexander Wachtel as emcee, was the first quiz program of its kind at E.N.C. In the interest of a more home-like dining room the Betas gave the college a large seascape.

Effects of the international effort for victory were seen in the Beta choice of officers. The first woman society president in years, Norma McEdward, was assisted by her feminine staff: Patricia Herrschaft, vice-president; Ruth Bass, secretary; and Jean Thorne, treasurer.

- Fifth Row:* D. R. Jones, Mansfield, J. D. Scott, Gould, Utter, Goodnow, Parry, Davis, Maybury, G. Cross, R. Smith, Sturtevant, Pennington, P. Moore, Maloney.
- Fourth Row:* Prouse, Rapalje, Ardrey, T. Jones, Hilgar, Gray, Allison, Shedd, Simmons, Benton, Pennypacker, Reed, Siekler, Terwilliger, T. Huna, Benson, Churchill, W. Dixon.
- Third Row:* Sumner, Hilsinger, Seitz, Congleton, M. Harris, Simms, Cody, Steiner, L. Boyd, Eshleman, Swenk, Armstrong, Wood, T. Cross, Dunlap, Hodges.
- Second Row:* Mellinger, J. Smith, Conser, Feiten, Tustin, Bryner, Hopkins, Traverse, Pettitt, Morris, Turkington, Koffel, M. B. Harris, Keller, Stickle, Chetakian, Hamilton, Weaver, Ham, Mauger, M. Dickinson, McElhenney, Lahne, Collins.
- Front Row:* Lemon, Boggs, Church, Melnick, Harbula, Boozell, C. Cubie, Graham, Amos, Freese, Shoff, Emmel, Grosse, Biscoe, Stone, Lingford, Dorothy, Umstead, G. Hawk, Cornell, McKittrick, E. Scott, Reed, A. Cubie.





Fifth Row: W. Taylor, Achhammer, J. D. Scott, Rearick, Brinker, Ladd, Bansmere, E. Smith, Manley.

Fourth Row: Dickson, Domingues, J. Jones, Brocksopp, Rice, Williams, Browne, Hess, Naylor, Burkhart, Hazelton, C. Boyd, Horton, Karker, R. Jones, K. Smith, Yamada.

Third Row: Corrie, Park, White, Norris, Jordick, Kerling, M. J. Ewing, Pangle, L. Haylett, Hickerson, Kline, S. Brickley, Teague, Braley, Allen, Falke, Hall.

Second Row: Park, Payne, Temple, Willwerth, Nesmith, H. Dickinson, Dodd, Trimbath, Harding, May, Deans, Webster, Mason, Michaels, Sprow, Shields, Davis, Hurlbutt, Tullis, Eastman.

Front Row: Staten, M. Ewing, Palmer, Gracey, Bowen, B. Smith, McCusker, Gale, Lanpher, Herrschaft, Professor Babcock, McEdward, I. Jones, Thorne, Bass, Thorp, K. Haylett, Wilson, Stiles, Christensen, Brooks, Douglas, Cameron, Perry.

Kighthood was still in flower on Rush Day as Sir Jack Maybury and Ladies Anna May Keffer and Peggy Dunlap welcomed new members to their court as they portrayed the Gamma "Way of Chivalry."

On Registration Day the Gammas were busy escorting potential knights and queens from train station to campus. Later they took a sight-seeing group to "ye olde spots of historie" in Boston. "The Harmony of the Nations," illustrating the brotherhood of mankind in Christ, was the climax of the year for the Gammas.

At the head of the Gamma Round Table was Robert Emmel, president. He was assisted by Louise Shoff, vice-president; Eunice Grosse, secretary; and Joseph Biscoe, treasurer.



Robert Emmel

Sigma Delta Gamma



Sixth Row: Bansmere, Amos, Reed, Pennypacker, Achhammer, Goodnow, Sturtevant, Mansfield, Dickson, Utter, R. Jones, Muxworthy, Rapalje, W. Taylor, Lutton, Hazelton, Harr, Rearick, Patton, Jordan, M. Richey, Stairs.
Fifth Row: Maloney, K. Smith, Carpenter, Rice, Ardrey, Slick, Emmel, Biscoe, G. Andrews, Allison, W. MacPherson, Tracey, Benton, Berk, Horton, Carnahan, Abersold, Sawyer, Pennington, Crispell.
Fourth Row: R. Patton, M. B. Harris, Lemon, Hedberg, Sprow, Boozell, Christensen, B. Brooks, Sumner, Bowen, L. Haylett, Ewing, Kline, Weaver, Harvey, Hamilton, McIlwain, T. Jones, Marta, Charrette.
Third Row: Hodges, Hardy, E. MacPherson, Eshleman, Gale, Herrschaft, Park, Musnug, Kerling, Turkington, Webster, M. Mason, Hansrote, Lassi, Flueck, Steiner, Washburn, Leonard, Shedd, McKitrick, E. Scott, Reed, Boggs.
Second Row: Hilsinger, Balwit, Stone, Lingford, L. Boyd, Norris, Collins, Harding, Hess, Simms, Rogers, Congleton, Nesmith, Adsit, Howe, Main, Lahue, Dodd, Douglas, M. Dickinson, McElhenney, Church, Swenk.
Front Row: Melnick, Himmegar, White, Palmer, Bee, Plyler, E. Smith, Van Dresser, J. Smith, Moberley, Yamada, Macomber, Thomas, Prouse, H. Dickinson, P. Andrews, Gray, Davidson, Elliott, Lunn, K. Haylett, Cameron, Bishop, Staten, Best, Woledge, L. Taylor.



Donald Freese

The Student Ministerial Association is organized to present to future ministerial candidates an honest and enlightening picture of the tasks which lie before them. Donald Freese, president; William Summerscales, vice-president; and William Cole, secretary-treasurer have worked together to offer a varied and stimulating program.

Some of the meetings which will long be remembered are the annual Squantum picnic, Dr. Harper's lecture on "Sin and Psychology," the Rev. M. Gilchrist's remarks on the pastor's work in the community, and the Rev. Edward's address on "Self-Criticism."

"To serve this present age,
 My calling to fulfill;
 Oh, may it all my powers engage
 To do my Master's will."

Student Ministerial Association

Evangelistic Association

Under the able leadership of President Merle Gray, the Evangelistic Association has been able to provide an active program for all its members. This organization, open to all students interested in evangelistic work, has conducted services in six Boston missions, held street meetings, and accepted appointments in nearby churches. Each Sunday, the faithful Hospital Group walks several miles to the Quincy City Hospital and back to provide inspirational music for the patients.

This association is the training-school for actual Christian service. Its members recognize the significance of living a Spirit-filled life, the importance of carrying a burden for those not within the fold, and the necessity of a substantial Christian training to win others to Christ.



Merle Gray

Third Row: R. Hawk, Clifford, Parry, Mason, E. Dell, Maybury, Dickson, Rice, Emmel, Charrette.

Second Row: Ardrey, Richardson, Grey, Harr, M. Richey, Curry, Lutton, Karker, I. Jones, Sawyer.

Front Row: Salvia, A. Smith, Prouse, Wachtel, Cole, Professor Young, Freese, Cross, Ladd, Taylor, Park, Koffel.





Musung, J. Smith, Park, Reed, Curry, Professor Earle.

College Missionary

*Second Row: E. Dell, W. Dixon, Sawyer, Stanford.
Front Row: Sickler, Browne.*



Who's Who



Second Row: White, Wachtel, W. Dixon, Summerscales, Freese, Marsden, Jordan, Rapalje, Park
Front Row: Conser, J. Smith, Douglas, Webster, Payne.

Honor Society

Third Row: Emery, Conser, McKinney, Sumner, Grosse, Shields.
Second Row: B. Mason, Sprow, Dittrich, B. Dickson, J. Dell, Plant, Stickle, Deans.
Front Row: Brown, Melnick, Sickler, Dean Munro, A. Cubie, Professor Spangenberg.



Literature Club



*Second Row: P. Moore, G. Cross, Dr. Harper, Utter, Sawyer, Freese.
Front Row: L. Boyd, J. Smith, Payne, Browne, Eshleman.*

Bowne Philosophical Society

*Third Row: Mason, Hilgar, Davis, R. Hawk, Hodges.
Second Row: Dickinson, Swenk, I. Jones, Sturtevant, Cooper, Harbula.
Front Row: McCusker, Emmel, Thorp, Miss Dygoski, Maloney, Austin, Keffer.*



Speech Club



*Third Row: Manley, D. R. Jones.
 Second Row: Turkington, Ham, Carpenter, Professor Lunn.
 Front Row: Mellwain, Marz, McElhenny, Hess, Ardrey, Williams, Charrette.*

Historical Society

*Third Row: Marta, Melnick, Boggs, E. Dixon, Hamilton, Mason, Humminger, Cubie.
 Second Row: Emery, Friend, Balwit, Hedberg, Carlson, Wood, Douglas, McKenny, Chatfield.
 Front Row: Harding, May, McKinney, Dr. Groves, Crutcher, Bowen, McKittrick.*



Future Teachers Association



Fourth Row: Carpenter, Hilgar, J. Dell, Muxworthy, G. Cross, Amos, Terwilliger, Moore, Sawyer, Biscoe, L. Davis.
Third Row: Ward, Douglas, J. Scott, Horton, W. MacPherson, E. Dell, J. Patton, G. Andrews, Hedberg, Chetakian, Umstead.
Second Row: Eshleman, L. Boyd, Plyler, Braley, Gale, Browne, Cody, Swenk, Conser, Cornell, Grosse, May.
Front Row: Best, R. Patton, M. E. Harris, Sunberg, Harvey, Professor E. Williamson, Carlson, Herrschaft, Flueck, Hamilton, Salvia.

A Cappella Choir

Second Row: Yamada, Flueck, Washburn, Higgins, Douglas, Lahue, Boggs, Cornell.
Front Row: Professor Cove, Miss Maddox, Hamilton, May, Webster, G. Hawk.



Music Club



AMBASSADOR QUARTET
CRUSADER QUARTET

G. Andrews, Curry, Freese, Maybury.

Clifford, P. Andrews, Summerscales, R. Hawk.

Quartets

Third Row: Stone, Lingford, G. Hawk, Bowen, Crutcher, Hurlbutt, Hodges, Corrie.
Second Row: Sumner, J. West, Wood, Harding, Shoff, Keffer, Hess, J. Smith, McCusker, Nesmith, Friend, Thorp.
Front Row: Lahue, Washburn, Harbula, Professor Williamson, Anderson, Wilson, Marta.



The Miriams



Fourth Row: W. MacPherson, Dickson, Richardson, Gray, Curry, R. Jones, W. Taylor, P. Andrews, Berk, Carnahan, T. Huna, Clifford,
Third Row: Norris, Chetakian, Van Dresser, Balwit, Larrabee, Congleton, Gracey, Currie, Simms, Harding, Hansrote, T. Cross, M. B. Harris, Coffee,
 E. MacPherson, McKenney, Marta.
Second Row: Manger, C. Cubie, Kerling, Graham, Friend, Reed, Hardy, Rogers, Bowen, B. Smith, Howe, Turpel, M. Dickinson, Hall, Dorothy,
 Doverspike, Nesmith, Falke.
Front Row: T. Jones, Bryner, Weaver, Carlson, Hedberg, Dunlap, Lutton, Professor Shields, Biscoe, Mitchell, White, E. Dixon, Hansrote, Moberley, E. Scott, Turner.

Psychology Club

Third Row: W. Dixon, Brinker, Domingues, J. D. Scott, K. Smith, Terwilliger, Benson, Prouse.
Second Row: Lunn, McKittrick, Cameron, Plyler, Park, Thorne, Hutton, Harvey, Gale, McEdward, R. Boyd, Professor Babcock, Churehill, George, Slick.
Front Row: Bass, Perry, Lanpher, Musnug, Shoff, Greene, M. Harris, Willwerth.



Biology Club



*Second Row: Sawyer, Williams.
Front Row: Gray.*

Men's House Council

*Second Row: Bryner, Gale, Cochran, Musnug.
Front Row: Sumner, M. B. Harris, May, Bowen, Doverspike.*



Women's House Council



Third Row: Koffel, R. Hawk, Shoff.
Second Row: Payne, I. Jones, M. Richey, Dunlap, Swenk, Amos, McEdward.
Front Row: Lanpher, Perry, Professor Naylor, Summerscales, Thorne.

The

N

E.N.C.'s high ideals of sportsmanship are encouraged and maintained by the N Club, the official athletic council of the college. Membership, which is by election, is on the basis of athletic ability, leadership, and Christian character.

A new project inaugurated by the organization in its aim of fostering athletic interests has been the purchasing of books on different sports for the library. It has also enlarged E.N.C.'s store of athletic equipment.

This year the club elected as its president William Summerscales; Norma McEdward, vice-president; Margaret Dunlap, secretary; Alma Swenk, treasurer; and Professor J. R. Naylor, faculty adviser.

Club

Alpha Football

The Alphas, with the highest scoring team in E.N.C.'s history, and with only one defeat on their record for the season, proved to be great competition for the Gamma trophy team.

With Mike Richey, Dick Hawk, and Roy Slick in the backfield, the Purple and White had speed to burn, and it was Richey's passing, Hawk's blocking, and Slick's running that gave the Alphas their unbeatable "balance."

Eddie "Bruiser" Dell was the block of granite in the Alpha line; his stubborn defensive plays floundered the running attack of the opposition. George Andrews, Bill Abersold, Dick Chase, and Jack Dell took turns at the end and center positions.

*Second Row: M. Richey, Chase, Slick, J. Dell, R. Hawk.
Front Row: G. Andrews, Abersold, Muxworthy.*





Third Row: Williams, Burkhart.
Second Row: J. Jones, Horton, Curry, E. Rice, Karker, Olsen.
Front Row: J. Jones, Domingues, Russell.

The Betas, although suffering their worst season in a long time, were no push-overs for enemy opposition as they fought stubbornly through every game.

Little "Frankie" Domingues was the spark plug of the Red and Black. As triple threat back he showed a fighting spirit till the final whistle was blown. Oliver Karker and Ellis Horton did a good job as "blocking backs" in the backfield. The Betas had a hard charging line headed by Vernon Curry and Gene Rice, with Harold Olson proving a tough end for enemy opposition to stop. Keith Smith, Joe Jones, and Paul Marsden were valuable substitutes.

Beta Football

Gamma Football

The Gammas, displaying one of the greatest passing combinations ever seen at E.N.C., captured the championship for the fourth straight year. Harold "Red" Parry's rifle arm literally passed the Gamma team to victory. Grant Cross, the "Don Hutson" of E.N.C., was target for Parry's passing, and it was this duo that accounted for the crucial scores. John "Bullet" Scott, the speed king of the backfield, stopped enemy drives time after time.

Eugene Terwilliger, Don Freese, and George Ardrey were the mainstays of the line which showed a traditional Gamma fighting spirit. Paul Clark, Ted Huna, Clarence Churchill, and Alex Cubie were substitutes.

*Second Row: Amos, T. Huna, Moore, Churchill, A. Cubie, J. D. Scott, Terwilliger.
Front Row: Parry, Goodnow, G. Cross, Freese.*





The Gammas carried off Field Day honors in the annual fall contest with the Purple-and-White Alpha team running a close second. Field Day is one of the most popular features of E.N.C.'s athletic program. Open to both men and women, these contests provide keen competition and enthusiastic interest for both participants and spectators.

Field Day

Alpha Basketball



*Second Row: Anderson, Turner, Greene, Higgins, L. Brown.
Front Row: Hardy, Friend, R. Boyd.*

The Alphas, with a host of veterans, proved to be one of the smoothest passing combinations on the E. N. C. floor. Coach Mike Richey, all-star forward, was for the third year their scoring ace. Bill Summerscales' court "savvy" and skillful ball handling gave the Alphas poise and balance; Dick Hawk and Roy Slick were fast-breaking forwards. Paul Lockhart and Bill Abersold used their towering height to advantage in defensive play. Newcomer Gordon Stanley, Jack and Eddie Dell, "Chuck" Muxworthy, and Walter MacPherson were dependable reserve forwards and guards for the Purple team.

*Second Row: Muxworthy, Abersold, J. Dell.
Front Row: G. Andrews, Slick, M. Richey, Summerscales, R. Hawk.*





Beta Basketball

Second Row: Thorne, McEdward, S. Brickley, McCusker, Corrie, Bass.
Front Row: Payne, Laupher, Perry.

Coach Irving Jones moulded his team around the Beta ace, Austin Wright. An all-star forward and all-around court player, he kept the Red and Black in the thick of competition all year. Merrill Ladd was the most improved player on the Beta squad, playing a consistent game at center. Keith Smith developed into a capable forward, and Howard Olson and Oliver Karker formed a pair of guards that easily broke enemy offense. Ellis Horton and Gene Rice paired up in the fore court to produce nice pass work, while Bob "Chub" Russell proved co-operative in any position.

Second Row: Hathaway, K. Smith, Olson, Ladd, Sloenn, Russell.
Front Row: Karker, I. Jones, Wright.



Gamma Basketball



*Second Row: Hamilton, Swenk, M. B. Harris, J. Smith, Emery.
Front Row: Weaver, Shoff, Dunlap, Crutcher.*

The Gammas, with three aces, produced one of the best scoring teams they have ever had. Harold "Red" Parry, on whom the Blue and Gold relied heavily, was the backbone of the team. John "Bullet" Scott made the lay-up shots, and Bob Jessel was the 'hook shot' king of the court. Grant Cross and Eugene Terwilliger alternated at center, and often took the rebounds off the backboard. Harvey Amos, Gamma coach and all-star player from last year, was a sound defensive guard. Paul Clark and Don Reed were reserve forwards, and Don Freese and Bob Goodnow were defensive substitute guards.

*Second Row: Ardrey, Amos, J. Scott, Parry, D. Reed.
Front Row: Terwilliger, Freese, G. Cross, Clark, Goodnow.*





Do You

Remember?





1. President G. B. Williamson
2. Mrs. Audrey Williamson
3. Dr. Vernon T. Groves
4. Professor W. J. Babcock
5. Dean Munro and Professor Mary Harris
6. Professor Esther Williamson
7. Rev. Samuel Young
8. Dr. Albert Harper
9. Professor Edith Cove

President and Mrs. G. B. Williamson display their small son, John Samuel, with just pride.

Dr. Vernon T. Groves has found that the best part of Campus Day is the post-labor nap.

While his laboratory class enjoys a picnic, Professor Babcock keeps a close look-out for storm clouds.

Professors Munro and Harris wear their class-room smiles in summer, too! So does Mrs. Esther Williamson.

No doubt it is memories of a successful lecture in Church History class that accounts for the satisfied countenance of Professor Samuel Young.

This home scene features Dr. Albert Harper.

Professor Edith Cove steps obligingly to pose after a busy day of classes and lessons.

Faculty At Ease

Journey's End

"Ye are the salt of the earth." Eastern Nazarene College graduates, attending the the University of Life, continue to diffuse the culture and the ideals of a Christian College throughout the world.

In home, church, school, community, on the mission field or at the battle-front, consecrated alumni live before the world the lessons they have learned at Eastern Nazarene College.

Supporting their Alma Mater with advertisement, finances, inspiration and prayer, the Alumni Association expands in influence as it increases in size.

Unity is essential to the life of an organization. Contributing to this unity are the regional clubs now existing in Boston, New York, and Providence, and on the Albany, Washington-Philadelphia, Pittsburgh and Akron districts.

The present financial goal of the association is to raise funds for paving the tennis courts.

Under the leadership of John Z. Andree, president; Margaret Shrader, vice-president; Edward S. Mann, executive secretary; Irwin K. French, treasurer; and E.N.C. trustee Edward S. Phillips, the Alumni Association continues to play its indispensable role in the life of Eastern Nazarene College.

1. Professor and Mrs. Mann.
2. Lee Powell, Virginia Graffam Powell.
3. Doris Pearsall Restrick, Ruth Friend Pearsall.
4. Ellen Rittenburg Follett, Louise Dygoski.
5. Helen Cassidy.
6. Alexander Ardrey, Margaret Hedberg Ardrey.
7. Harold Weller, Ruth Adsit Weller.
8. Clifford Church, Cassandra Swinhoe Church.
9. C. Weston Jones, Evelyn Hall Jones.
10. Lee Powell, Dale Powell.
11. Irma Koffel.
12. Laura McKinney, Rachel Emery Fiske.
13. William Cole.
14. Leland Davis, Dale Powell, Dorothy Simonson Powell, Elizabeth Zimmerman, Eleanor Emery, Carl Hanks, Ruth Anderson, Jessie McCullough, Kenneth Robinson.
15. Mary Lilley Shields, John Shields.
16. Della Boggs.
17. Kenneth Robinson.





Third Row: Lewis, Whetstone, K. Smith, Lutton, Cross, Brinker, Marsden, W. Dixon, Olson, Williams, Emmuel, Dickson.
Second Row: Charrette, Ardrey, Churchill, Sumner, Bowen, Friend, White, Naylor, Wooledge, M. E. Harris, McKinney, Chatfield, Hilgar, Prouse, Slick.
Front Row: Hamilton, Willwerth, Perry, Lanpher, Allen, Boggs, Thorp, Bishop, Harbula.

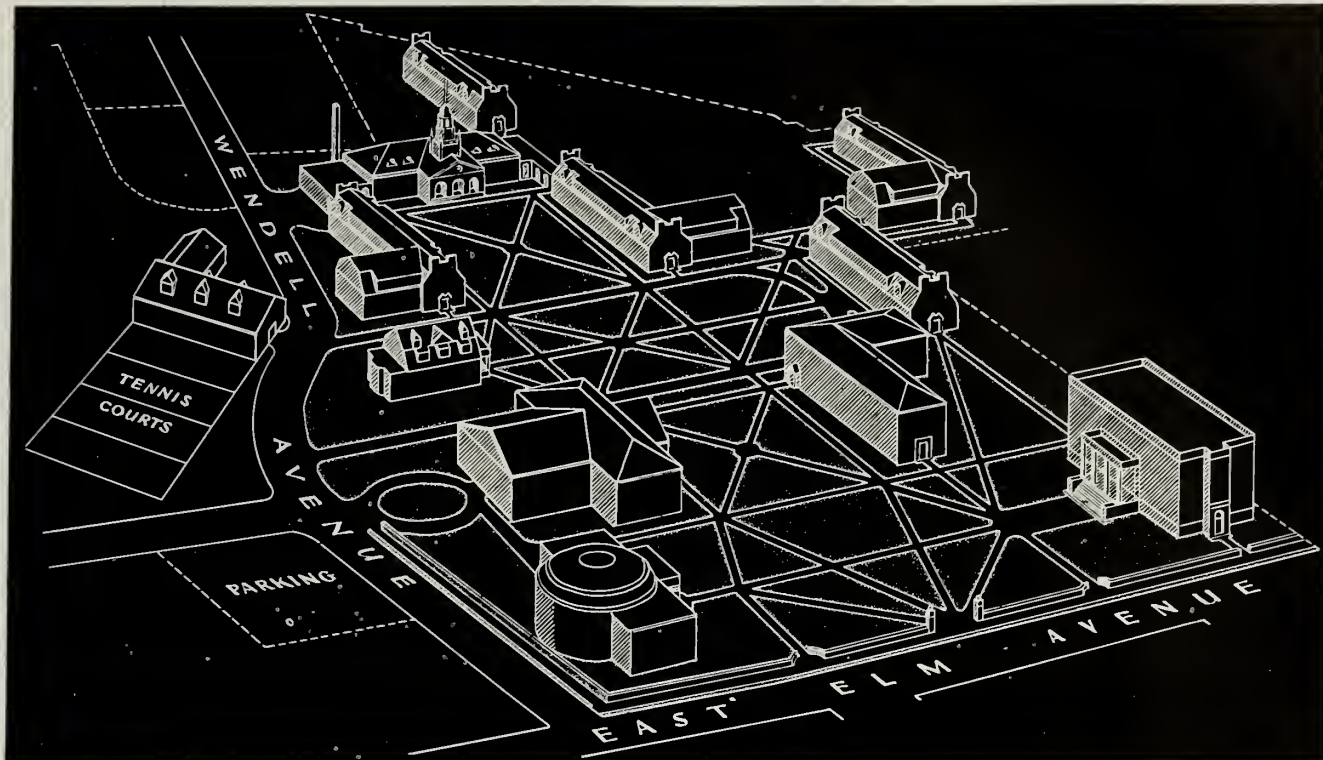
In response to war-time demands the third annual summer session of Eastern Nazarene College opened on May 25 and lasted through August 4 with a substantial increase in enrollment over the preceding year.

A full course in theology and Bible study under Professors Samuel Young and Ralph Earle, Jr., was offered to meet Selective Service regulations, which required theological students with 4D classifications to remain in school during the summer months. Several students from other local theological schools matriculated under these rules.

Professor J. R. Naylor offered courses in mathematics, Dr. Fred J. Shields in psychology, Dr. Vernon T. Groves in education, Professor Kent Goodnow in language, and Mrs. Edith Goodnow in English. Academy mathematics, English, and language classes permitted Academy students to gain one and one-half units during the session. Professor Naylor was director of the summer work.

The advantages of the summer session and the interest shown by the students are indications that it may gain a permanent place at Eastern Nazarene College.

Summer School



Our new campus has been planned in grateful appreciation of our servicemen, to whose sacrifices we owe our freedom; of our country and her wise guardianship; and of our God, to whom E.N.C. has dedicated her life and her service.



Post-War Plans



A D V E R



T I S E R S

COMPLIMENTS OF - - -

DEWARE BROTHERS

QUINCY'S LARGEST AND
MOST BEAUTIFUL FUNERAL HOME
AND CHAPEL

HOME LIKE ATMOSPHERE

Donald M. Deware

and

Robert M. Deware (U. S. Army)

Directors

576 HANCOCK STREET

WOLLASTON

Telephone GRAnite 1137



EASTERN NAZARENE COLLEGE

Institutional Member of New England Association of Colleges and Secondary Schools

Member Association of American Colleges
(the national organization of accredited institutions of learning)

Liberal Arts	Industrial Chemistry
Divinity	Pre-Nursing (in collaboration with New England Deaconess Hospital, Boston)—B.S. with Certificate in Nursing in 5—
Education	years, qualifying student to take state board examinations for R.N.
Pre-medicine	Engineering (in collaboration with Northeastern University, Boston)
Speech	
Music	

Summer Session

Registration May 31
Accommodations Limited

Apply Early

Entrance requirements can be completed during the college freshman year

Fall Session

Registration September 11
Reasonable Rates

*"Study to shew thyself approved unto God, a workman that needeth not to
be ashamed, rightly dividing the word of truth."*



Compliments of . . .

N. Y. P. S.

Robert Hersh
President

Mrs. Ruth Galusha
Sunday School Superintendent

Annie Haas
W. F. M. S. President

CHURCH OF THE NAZARENE

1109 Wyoming Street
Organized 1926

RALPH A. MICKEL, *Minister*
11th and Wyoming Streets
Allentown, Pa.
Phone 6422

AKRON DISTRICT

CHURCH OF THE NAZARENE

Rev. O. L. Benedum, *District Superintendent*

Advisory Board

CHARLES C. HANKS
IRA R. AKERS
E. S. CARMAN
S. S. BENNETT

District Secretary

C. B. WOOD

District Treasurer

CHARLES C. HANKS

“GLORY”

W. F. M. S. President

MARY B. AKERS

N. Y. P. S. District President

HOWARD T. LEWIS

E. N. C. Trustees

O. L. BENEDUM
IRA R. AKERS
E. S. CARMAN
E. A. PEPPER

A district with a constant vision for Eastern Nazarene College continued success and victory



E. VAN HOUGHTON

Pastor

73 West Center Street
Beacon, N. Y.

BEACON

CHURCH OF THE
NAZARENE

1 Teller Avenue

Beacon, New York

"The church that only moves Forward"

FIRST CHURCH
OF THE NAZARENE

24 Seminary Avenue

Auburn, N. Y.

When in the city worship with us.
A friendly welcome awaits you.

Rev. Howard A. Park, *Pastor*

CHURCH OF THE NAZARENE

North Attleboro, Mass.

George I. Delp

Pastor

CHURCH OF THE NAZARENE

Barberton, Ohio

Sunday School Superintendent

C. VIRGIL TROUT

N. Y. P. S. President

MISS JUANITA BOWEN

W. F. M. S. President

MRS. STELLA SMART

CLYDE B. WOOD

Pastor

Congratulations To The Graduating Classes

When In

BALTIMORE, MD.

Attend

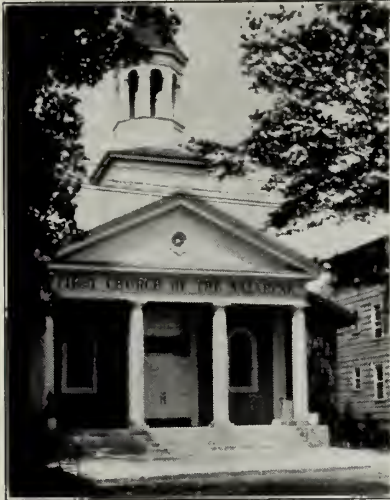
**THE FIRST CHURCH
OF THE NAZARENE**

Whitmore Avenue

REV. EVERETT S. PHILLIPS, *Pastor*

Listen to our radio program every Saturday night at 11:30

Station WBAI—50000 watts 1090 on your dial

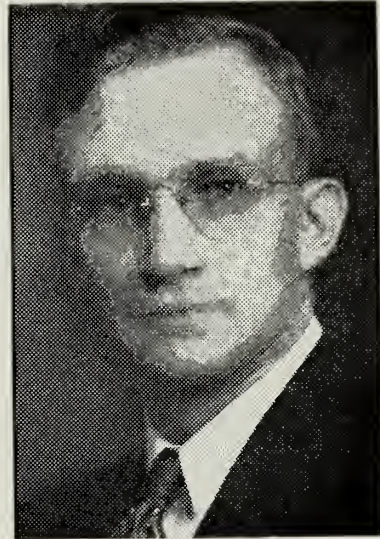


Church of the Nazarene

240 Main Street
Binghamton, New York

Minister

PAUL S. GILMORE
15 Cleveland Avenue



We are proud of E.N.C. Also proud
of our seven students at E.N.C.

Church of the Nazarene

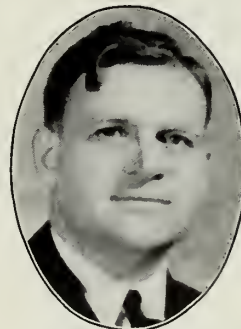
Beverly, Mass.
Rantoul and Cabot Streets

REV. R. E. LOCKWOOD
Minister

Services

Sunday	1:00 a.m. and 7:00 p. m.
N. Y. P. S.	6:00 p. m.
Prayer Meeting, Wednesday	7:30 p. m.

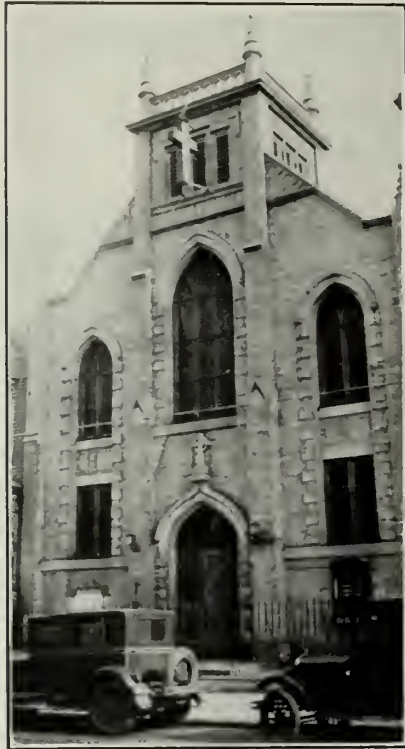
BRADFORD, PA. CHURCH OF THE NAZARENE



C. G. SCHLOSSER, *Pastor*
Graduate of Class of '33

An E.N.C.'er is never a stranger in Bradford whether student, representative or faculty member.

—Ask them—



HOOPLE CHURCH

64 Menahan Street, Brooklyn, N. Y.

(Near Gates Ave. Station, B.M.T.)

“A CHURCH WITH A PAST AND FUTURE”

Sunday School	9:45 a. m.
Morning Worship	11:00 a. m.
N. Y. P. S.	7:00 p. m.
Evening Service	7:45 p. m.
Prayer Meeting	Wednesday, 8:00 p. m.
Nazarene Voice Broadcast, WBYN	3:30 p. m.

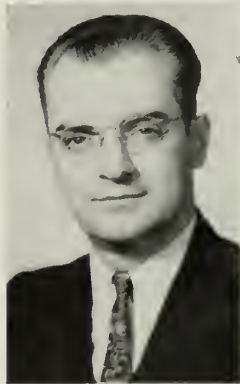
(When in New York Worship With Us)

VERNON E. THOMAS

Pastor

630 Kosciusko St., Brooklyn 21, N. Y.

Phone GL 5-4889



CLARENCE L. ARNOLD

Pastor

712 Oak Street
Bloomsburg 636

BLOOMSBURG CHURCH OF THE NAZARENE

250 East Seventh Street

Bloomsburg, Pennsylvania

Organized July 9, 1908

Sunday School Superintendent

W. W. Moyer

N. Y. P. S. President

Ruth Kline

W. F. M. S. President

Mrs. C. L. Arnold

SERVICES

Sunday School	9:30 a.m.
Morning Worship	10:45 a.m.
N. Y. P. S.	7:00 p.m.
Evangelistic Service	7:45 p.m.
Prayer Meeting, Wednesday	7:45 p.m.

Mortgage Burning Service, June 10, 1945—2:30 P.M.



CHURCH OF THE NAZARENE
 Corner Winooski Avenue, Pearl Street
 Burlington, Vermont

CHESTER FRANCIS AUSTIN
Pastor

	Sunday	
Sunday School		9:45 A.M.
Morning Worship		11:00 A.M.
N. Y. P. S.		6:30 P.M.
Evangelistic Service		7:30 P.M.
	Wednesday	
Prayer Meeting		7:30 P.M.

BEULAH
CHURCH OF THE NAZARENE

92 Utica Avenue
 Brooklyn, N. Y.

Church Officers

GENETHA HARRIS	<i>Secretary</i>
CHARLES SKEETE	<i>Treasurer</i>
DARNELL KING	<i>Sunday School Superintendent</i>
RHODA GITTENS	<i>W. F. M. S. President</i>

The Church of the Open Door

Jesus Never Fails

LEVI A. FRANKLIN
Minister

558 Jefferson Avenue, Brooklyn, N. Y.
 Phone Glenmore 5-2115

CHURCH OF THE NAZARENE

Bel Air, Md.

REV. NELSON H. HENCK
Minister

"A Friendly Church with a Friendly Message"

FIRST CHURCH
OF THE NAZARENE

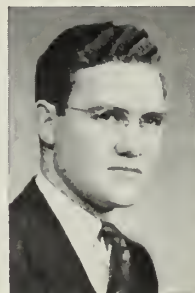
578 Richmond Avenue
 Buffalo, N. Y.

KENNETH E. BABCOCK
Pastor

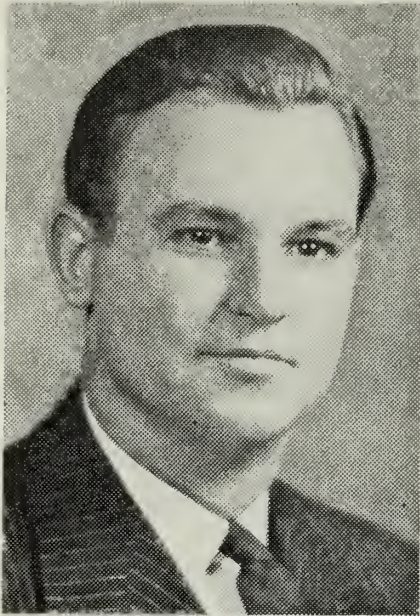
The Friendly Old Fashioned

CHURCH OF THE NAZARENE

White Church Road
 Brooktondale, N. Y.



REV. STANFORD E. ERNEST
Pastor



Compliments of . . .

CHURCH OF THE NAZARENE

Bunola, Pa.

Sponsored by
N. Y. P. S.

Kenneth E. Robinson, *Pastor*

FIRST CHURCH OF THE NAZARENE

234 Franklin St.

Cambridge 39, Mass.

Rev. H. Leslie MacKay, *Pastor*

Sunday Services

- 9:30 A.M. Prayer
- 10:00 A.M. Sunday School
- 11:00 A.M. Morning Worship
- 6:00 P.M. N. Y. P. S.
- 7:00 P.M. Evangelistic Service

Wednesday

- 7:30 P.M. Prayer and Praise



When in Boston Worship With Us
We are only ten minutes from Park Street Station

**BROOKLYN
CHURCH OF THE NAZARENE**

Broadview and Cypress Avenue
Cleveland, Ohio

"A Church Grows in Brooklyn"

THOMAS H. YOUNCE

Pastor



32 ACADEMY STREET DANIELSON, CONN.

REV. ALTON G. PERKINS

Minister

Church Services

Sunday

Morning Worship	10:30 A.M.
Church School	12:00 Noon
Young People's Service	6:45 P.M.
Evangelistic Service	7:30 P.M.

Friday

Prayer and Praise Service	7:30 P.M.
---------------------------	-----------

Saturday

Prayer Group	7:30 P.M.
--------------	-----------

"A Friendly Church" with "A Warm Welcome"

CHURCH OF THE NAZARENE

Union Street and Lisbon Road
Columbiana, Ohio

*The Church where you
are never a stranger*

REV. CARL B. HANKS

Pastor

322 Union Street
Columbiana, Ohio

Phone 539

Come Rest Learn



First Church of the Nazarene

910 Highland Avenue
Chester, Pennsylvania

Sunday Services

Church School	9:45 a. m.
Morning Worship	10:45 a. m.
N. Y. P. S.	6:45 p. m.
Evangelistic Service	7:45 p. m.

Wednesday

Prayer and Praise Meeting

REV. C. E. HOLLOWAY

Minister

910 Highland Avenue
Chester, Pa.
Phone 4746

The friendly church

WHERE YOU MAY BE A VISITOR BUT NEVER A STRANGER

Compliments of

The First Church
of the Nazarene

Hayden Ave. at Claiborne Road
EAST CLEVELAND, OHIO

H. B. MACRORY, *Minister*

GREETINGS FROM NEW HAMPSHIRE - - -

D E R R Y

CHURCH OF THE NAZARENE

West Broadway Derry, N. H.

LINCOLN PARK

Daniel Webster Highway South Hooksett

TOM M. BROWN

Pastor

6 High Street, Derry, N. H.

Telephone 461-M

CHURCH OF THE NAZARENE

Hudson Street

Dover, New Jersey

Rev. Estelle Crutcher

Pastor



Sunday School Supt.

R. L. Ware

N. Y. P. S. Pres.

Preston Morris

W. F. M. S. Pres.

Mrs. F. Zanes, Sr.

F. W. F. S. and

Junior Supervisor

Mrs. F. Zanes, Jr.

REV. C. G. RIFE

Pastor

CHURCH of the
NAZARENE
Deepwater, N. J.

EAST LIVERPOOL, O.

EAST LIVERPOOL BANK

PAY TO THE
ORDER OF

Forever 194

Eastern Nazarene College \$ All

Our Good Will and Support

First Church of the Nazarene DOLLARS



First Church of the Nazarene

H. DALE MITCHELL, *Pastor*

East Liverpool, Ohio

Compliments of the . . .

**FIRST CHURCH
OF THE NAZARENE**

East Rockaway, N. Y.

REV. CLAUDE W. JONES

Pastor

CHURCH OF THE NAZARENE

407 Atlantic Avenue

Freeport, N. Y.

REV. JAMES SHAW

Pastor

CHURCH OF THE NAZARENE

21st and Wallace Streets

Erie, Pa.

	<i>Sunday Services</i>	
Church School		9:45 A.M.
Worship		11:00 A.M.
Youth Meeting		6:30 P.M.
Evangelistic Service		7:30 P.M.
	<i>Wednesday</i>	
Prayer Meeting		7:30 P.M.

	<i>Radio Ministry</i>	
Saturday Morning		9:45-10:00 A.M.

1490 on the Dial

WERC

A. B. MOUNTFORD

Pastor



A "Lower Light" for the Darkest Night

**FIRST
CHURCH OF THE NAZARENE**

Cedar and Holdridge Streets

Elmira, N. Y.

REV. ANTHONY B. SAMPSON, *Pastor*

813 South Broadway

Elmira, N. Y.

Ph. 2-2124

"The Hour will be filled with Worship,
With songs and praise and prayer,
The burdens of life will be lifted
From all who enter there."



It's a Date!

YOUR MID-WEEK

HYMN

SING

Each Wednesday Evening

10:30 p.m. Eastern War Time

C-H-M-L

"900 on Your Dial"

CHURCH OF THE NAZARENE

"Hamilton's Singing Church"

92 Ottawa St., N. Hamilton, Ont.

H. B. WARD, *Pastor*

Class of '29



COMPLIMENTS OF . . .

CHURCH OF THE NAZARENE

Fairfield, Maine

WE BELIEVE IN E.N.C.

Church—81 Main Street

Parsonage—75 High Street

REV. DONALD H. STRONG, *Minister*

An E.N.C. Graduate

Compliments of

THE CHURCH OF THE NAZARENE

Haverhill, Mass.

JAMES M. CUBIE, *Pastor*

8 Taft Avenue

Tel. Haverhill 4420

Services

CHURCH BIBLE SCHOOL	10:00 A.M.
MORNING WORSHIP	11:00 A.M.
N. Y. P. S.	5:45 P.M.
EVANGELISTIC SERVICE	7:00 P.M.
PRAYER MEETINGS, WEDNESDAY AND FRIDAY	7:30 P.M.

"Holiness Unto The Lord"



CHURCH OF THE NAZARENE

Jefferson, Ohio

REV. LEROY M. HASTIE, *Minister*

"The Church Where No One Is A Stranger"

Sunday School	9:30 A.M.
Morning Worship	10:45 A.M.
Y. P. Service	6:45 P.M.
Evangelistic Service	7:30 P.M.
Tuesday Cottage Prayer Meeting	10:00 A.M.
Wednesday Prayer and Praise Service	7:30 P.M.
Missionary Meeting	First Friday of Each Month

When in Jefferson Visit Us

Compliments of . . .

CHURCH OF THE NAZARENE

Kenvil, N. J.

Kenvil Avenue, near Route 6

REV. M. D. LAURIE

Pastor

"A Living Message For You"

CHURCH OF THE NAZARENE

Elmendorf St. and Wiltwyck Ave.

Kingston, N. Y.

EARL G. LEE

Pastor

Compliments of . . .

CHURCH OF THE NAZARENE

North Center Street

Grove City, Pa.

RUSSELL E. LEWIS

Minister

CHURCH OF THE NAZARENE

Kent, Ohio

A Friendly Church

With a Hearty Welcome

O. F. RING

Pastor



REV. W. W. TINK
District Supt.

To
E. N. C.
Graduates

Congratulations from

The
MARITIMES



Maritime Prospective
Students



AN INVITATION . . .

TO WORSHIP

"The Master is here and calleth for thee"

H. E. HECKERT
Minister
421 Derstine Avenue
Phone 4446

CHURCH OF THE NAZARENE

Richardson and Derstine Avenues

Lansdale, Pennsylvania



CHURCH OF THE NAZARENE

Spruce and Smith Streets

New Bedford, Mass.

Pastor, JOHN E. WARNER TURPEL—62 STATE STREET

Phone 7-9545

Church Services

BIBLE SCHOOL	10:00 A.M.
WORSHIP	11:00 A.M.
JUNIOR	3:00 P.M.
YOUNG PEOPLE'S	6:00 P.M.
EVANGELISTIC	7:00 P.M.

Church Officers

<i>Secretary</i>	JAMES B. TRIPP
<i>Treasurer</i>	ANNIE SYLVARIA
<i>W. M. President</i>	MYRTILLA TRIPP
<i>Sunday School Supt.</i>	STANLEY BROWN
<i>Y. P. President</i>	ALICE BOUCHARD

THURSDAY PRAYER FOR SERVICE MEN 7:15 P.M.

THURSDAY WEEKLY PRAYER MEETING 7:30 P.M.

The Church with a Holy Freedom and a Human Friendliness

A Debtor to E. N. C.

CHURCH OF THE NAZARENE

Livermore Falls, Maine

Church School	10:00 A.M.
Morning Worship	11:00 A.M.
N. Y. P. S.	6:00 P.M.
Evangelistic Service	7:00 P.M.
Prayer Meeting, Wednesday	7:30 P.M.
Bible Study, Friday	7:30 P.M.

R. F. SHOFF
Pastor

GOD BLESS E.N.C.

CHURCH OF THE NAZARENE

71 Chapel Street
Norwood, Mass.

R. E. Howard, *Pastor*

CHURCH OF THE NAZARENE

79 Lawrence Street
New Haven 11, Conn.

A Growing Church
with
A Spiritual and Cordial
Atmosphere

H. J. S. BLANEY
Pastor



“TO KNOW CHRIST AND TO MAKE HIM KNOWN”

Our Task— to give Christ to the nations.

Our Call— 500 new missionaries, 1000 new pastors.

Our Resources— Consecrated, spirit-filled, trained young men and women.

The youth of our church will not fail. We have full confidence in the devotion of E.N.C.'s leadership and in the sincerity of her students, one-third of whom are from the churches of New England.

REV. DONALD H. STRONG
District President

New England District N. Y. P. S.

District Council:

REV. JOHN N. NIELSON

WARREN C. LAHUE

REV. PAUL HETRICK

MRS. ALICE KAUFFMAN

MRS. JEANITA FALLON

REV. JOHN B. NIELSON



CHURCH OF THE NAZARENE

Ogdensburg, N. Y.

JAMES W. HUMBLE
Pastor

The Church With . . .

Vitality
Interest in Souls
Sincerity in Worship
Implanting of Christian principles
One-ness in purpose
Never knowingly shirking duty

" Holding forth the Word of Life "

CHURCH OF THE NAZARENE

Oswego, New York

GEORGE J. DOUGLAS
Minister

Congratulations to

E. N. C.

Class of '45

CHURCH OF THE NAZARENE

Pine and Freedly Streets

Norristown, Pa.

Where Christians love to meet



Service

Sunday School 9:45 a.m.

Worship 10:45 a.m.

N. Y. P. S. 6:45 p.m.

Evangelistic Service
7:30 p.m.

Prayer Service,
Wednesday 7:45 p.m.

REV. BOYD M. LONG
Pastor

Compliments - - -

ONTARIO DISTRICT



REV. ROBERT F. WOODS
District Superintendent

The Pittsburgh District

THE CHURCH OF THE NAZARENE



"A revival in every church, and a church in every city in the district"

“VICTORY”

ANNUAL CAMP MEETING

Alameda Park, Butler, Pa.

July 5—July 15

R. F. HEINLEIN, *Dist. Supt.*

Workers: DR. G. B. WILLIAMSON, REV. BONA FLEMING, AND PROF. VESEY STEMM

CHURCH OF THE NAZARENE

1111 Main Street
Portage, Pa.



K. F. KAMINSKE
Minister

"In all thy ways acknowledge Him, and He shall direct thy paths"—Prov. 3:6.

Sunday Services

Church School	9:45
Worship	10:45
N.Y.P.S.	6:45
Evangelistic Service	7:45



Sunday	
Pre-Prayer	9:45
Sunday School	10:00
Worship	11:00
Intercession	4:00
N. Y. P. S.	7:00
Evening Service	7:45
Wednesday	
Prayer Meeting	7:30
Thursday	
Juniors	3:30
Boy Scouts	7:00

WELCOME
TO THE
"SINGING CHURCH"

REV. & MRS.
L. S. BOARDMAN

19 Gardiner St.
Richmond
Maine

Phone 124



CALVARY
CHURCH OF THE NAZARENE

Centre Avenue and Fourth Street
Reading, Pennsylvania



"A Friendly Church with a Great Message"



G. THOMAS SPIKER, *Pastor*

Services

Sunday Bible School	9:45 A.M.
Worship	10:45 A.M.
Senior and Hi-N.Y.P.S.	6:45 P.M.
Evangelistic Service	7:30 P.M.
Prayer Meeting, Wednesday	7:45 P.M.
Children's Meeting, Friday	6:45 P.M.
Young People's Radio Broadcast Friday night	7:45 to 8:15 P.M.

"Echoes From Calvary" over Station WRAW
Reading, Pa. 1340 on the Dial

When in Reading worship in the church that was built by the pastor and his people.

. . . *The Foundation of God Standeth Sure* . . .



JOHN N. NIELSON, *Dist. Supt.*

We Pledge To

E. N. C.

Our

PRAYERS

LOYALTY

SUBSTANCE

YOUTH

The New England District

We Look To

E. N. C.

For

Youth Devoted To Our

DOCTRINES

STANDARDS

CHURCH

EVANGELISM

LET EVERY ONE THAT NAMETH THE NAME OF CHRIST DEPART FROM INIQUITY

Compliments of . . .

FIRST CHURCH OF THE NAZARENE

Corner 108th Street and 95th Avenue
Richmond Hill, New York

Pastor

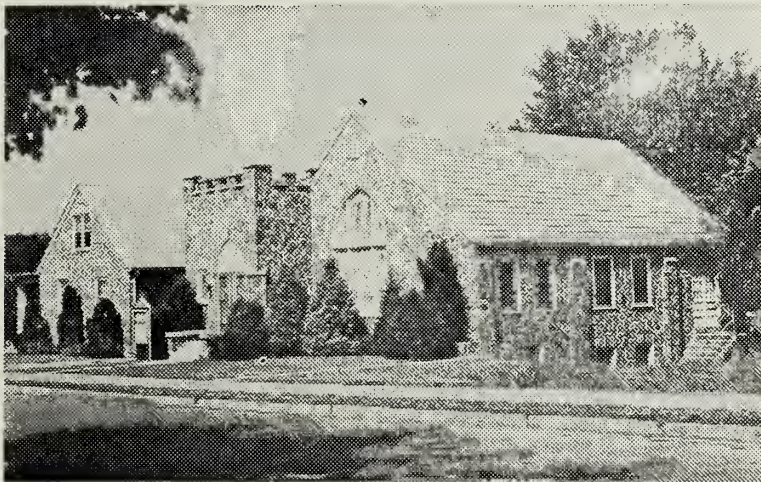
REV. E. E. YOUNG
108-05 95th Avenue
Richmond Hill, 19
New York
Phone
Virginia 9-5734



Services

Sunday School	9:45
Worship	11:00
N. Y. P. S.	6:45
Evening Service	7:45

Dedicated to the Promotion of Holiness



"If I have found grace in thy sight, show me thy Glory" Ex. 33,13

Ours is a lively N. Y. P. S.

MILDRED BEAN

President

PVT. GLENN W. EAGLE

Vice President

JUANITA MINK

Treasurer

EUNICE EAGLE

Secretary

THE CHURCH OF THE NAZARENE

Fifth Avenue and Washington Street
Royersford, Pennsylvania

NELSON G. MINK, *Pastor*

"Reach up as far as you can and God will reach down all the rest of the way"

CHURCH of the NAZARENE

Sebring, Ohio

REV. ELWOOD J. DODGE

Minister

A FRIENDLY CHURCH WITH A HOME-LIKE ATMOSPHERE

Congratulations and Best Wishes

To Faculty and Students of E.N.C.

For the accomplishments of the School Year, 1944-45

Compliments of N.Y.P.S. of

**THE LITTLE WHITE
CHURCH OF THE NAZARENE**
Schuylkill Haven, Pa.

"The Church where the
Young People Gather"

Church Officers

Sunday School Supt. MRS. R. FREY
N. Y. P. S. President MISS BETTY CRESSWELL
W. F. M. S. Pres. MISS CATH. PALSGROVE
REV. MRS. MILDRED HOFFMAN
Pastor

CHURCH OF THE NAZARENE

Findley Street
Toronto, Ohio

REV. CHARLES C. HANKS
Pastor

A Church With a Purpose

CHURCH OF THE NAZARENE

*The Church Where You Are Never
A Stranger*

52 Westminster Street
Springfield, Mass.

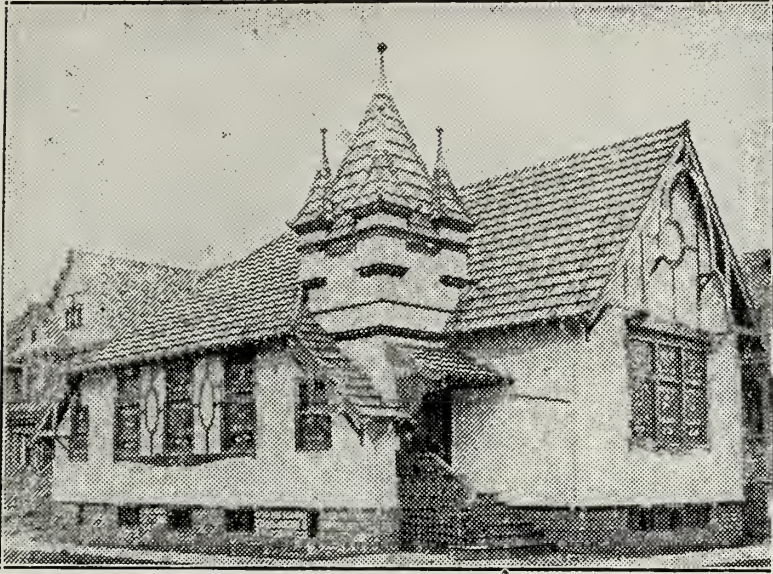
See our church sign on State Street, one mile from
the center, Route No. 20. Friends traveling between
Boston and New York, visit us.

R. J. KIRKLAND
Pastor

A Hearty Welcomes Awaits You
at

**THE CHURCH
OF THE NAZARENE**
Springboro, Pa.

R. G. MERRITTS
Pastor



The Singing Church of Syracuse

FIRST CHURCH OF THE NAZARENE

West Newell and Cannon Streets
Syracuse 5, New York

A CHURCH, WHERE . . .

The whole Bible is preached; music and singing are given much emphasis; the missionary society includes men as well as women; the young people left at home pray for upwards of forty in the service of their country; the Sunday School is considered not just another organization, but essential to every department of the church, local, district, and general; dues and obligations are met when due; the salvation of souls is above every other consideration; E.N.C. is appreciated and considered necessary to our future as a denomination.

BROADCAST

Sunday Morning

8:30 - 9:30

W-O-L-F 1490 Kil.



Morning Star Ladies Radio Quartette

Class Meeting 9:00 a.m.
Sunday School 9:45 a.m.
Worship 10:45 a.m.
N. Y. P. S. 6:30 p.m.
Evangelistic 7:30 p.m.

Mid-Week Service,
Wednesday 7:45 p.m.

Y. P. Cottage Meeting,
Friday 7:45 p.m.



JAMES E. HUNTON
Pastor

CHURCH SCHOOL
MORNING WORSHIP
N. Y. P. S.
EVENING SERVICE
MID-WEEK, THURSDAY

10:00 A.M.
11:00 A.M.
6:00 P.M.
7:00 P.M.
7:30 P.M.

"An Aggressive Church of Friendly People"

SPEND YOUR VACATION IN MAINE
and visit

THE SOUTH PORTLAND CHURCH
176 Sawyer Street

TUNE WGAN — 560 K.C.

Sunday—1 P.M.
Wednesdays, Thursday, Friday—10.15 A.M.



CHURCH OF THE NAZARENE

116 North Dawson Street
Uhrichsville, Ohio

A Spiritual Church

— *Holiness unto the Lord* —

Come and Worship With Us!

CLARENCE J. HAAS, *Pastor*

TORONTO

REV. H. V. MUXWORTHY, *Pastor*
MR. ERNEST BODEN, *President*

**MAIN
STREET N.Y.P.S.**

Membership 186
(Including Juniors)
PRODUCING MATERIAL FOR E.N.C.

Compliments of

Bolindale Church of the Nazarene

Ridge Road S.E.

Warren, Ohio

Ernest B. Marsh, *Minister*

ONTARIO

All ye that pass by visit . . .

**THE CHURCH
OF THE NAZARENE**

Waltersburg, Pa.
Route 51

REV. RAYMOND HOLSOPPLE
Pastor

"Come with us and we will do thee good."

*Preaching
and Scriptural
Holiness*

REV. H. WESTON BROWN
179-21 144th Avenue
Springfield Gardens
L. I., N. Y.



Our Pastor
REV. G. V. WOODS

W
A
R
R
E
N

P
E
N
N
S
Y
L
V
A
N
I
A



Whenever you are around Warren,
remember to visit our church at the
corner Pennsylvania Avnue East and
Irving Street.

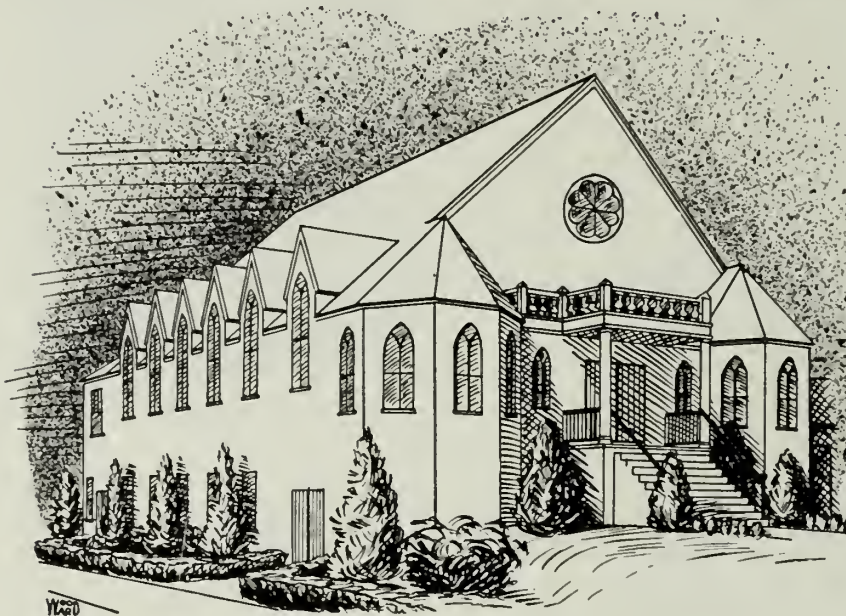
Phone 196

"A friendly church in a friendly city"

The First Church of the Nazarene

WEST CHESTER, PA.

REV. HENRY H. REEVES, *Pastor*



BEST
WISHES
and
CONGRATU-
LATIONS
to the
CLASS
OF '45

"THE REVIVAL CHURCH"

Warren, Ohio First Church

Buckeye and Mulberry N.W.

D. D. PALMER, *Pastor*

Morning Worship, Sunday	10:45 A.M.	N. Y. P. S.—Hi N. Y. Juniors,	
Evangelistic Service, Sunday	7:30 P.M.	Sunday	6:30 P.M.
Mid-Week Service, Thursday	7:30 P.M.	Radio Program, Sunday	9:30 P.M.
Church Sunday School	9:30 A.M.		
Mother's Prayer League, Thursday	9:30 A.M.	Men's Prayer Band, Saturday	7:30 P.M.

"A CHURCH WHERE YOU ARE NEVER A STRANGER"

One Block North of Route 82, West Market Street

Buckeye and Mulberry (¾ mile from Court House)

VISIT WITH US

West Somerville
CHURCH OF THE NAZARENE

Elm and Russell Sts., (Cutter Square) West Somerville, Mass.
IN GREATER BOSTON



Sunday School Superintendent
MR. GEORGE MANN

N. Y. P. S. President
MR. ROBERT OLDFORD

W. F. M. S. President
MRS. MARETTA PRIME

Church Treasurer
MRS. ETHEL B. FADER

Church Secretary
MRS. RUTH FADER WOOD

"I was glad when they said unto Me, let us go unto the House of the Lord"
"Come thou with us and we will do thee good"

Sundays

Intercession	9:00 A.M.
Bible School	10:00 A.M.
Worship and Sermon	11:00 A.M.
N. Y. P. S. Meeting	6:00 P. M.
Evangelistic Service	7:00 P. M.

Wednesday

Bible Study	7:30 P. M.
Prayer and Praise	

WE WELCOME YOU!



REV. J. C. ALBRIGHT
Pastor



ERNEST E. GROSSE
Minister

When You Visit Washington
Worship at

THE FIRST CHURCH
OF THE NAZARENE

7th and A Streets, N.E.

A sanctuary dedicated to the conser-
vation and propagation of Scriptural
Holiness.

TUNE IN . . . "THE BEAUTY OF HOLINESS"

Over Radio Station WINX (1340 Kilo.), Sunday mornings, 9.05—9.35

New England's Largest

CHURCH AND CHURCH SCHOOL SUPPLY HOUSE

Whittemore Associates, Inc.

16 ASHBURTON PLACE, BOSTON, MASS.

Telephone: CAPitol 6866

BIBLES - BOOKS

CHURCH FURNITURE

STAINED GLASS WINDOWS

NEW YORK DISTRICT
CHURCH OF THE NAZARENE

LYLE E. ECKLEY, *District Superintendent*

OUR DISTRICT HAS . . .

1. AGGRESSIVE PROGRAM

2. CAPABLE LEADERSHIP IN EVERY DEPARTMENT

3. A GREAT FUTURE

4. ABUNDANT OPPORTUNITY FOR CHRISTIAN SERVICE

We are looking to E.N.C. Graduates to help us evangelize the 12 millions of New York

Compliments

Church of the Nazarene

FIRST STREET, LOWELL, MASS.

Pastor

REV. D. WARD ALBRIGHT

Telephone 2-9342

Parsonage
247 Beacon Street

WASHINGTON-PHILADELPHIA DISTRICT

CHURCH of the NAZARENE

Annual District Missionary Convention, July 31

Annual Sunday School Convention, July 31

Washington-Philadelphia District Assembly, August 1-2

Annual N. Y. P. S. Convention, August 3

Annual District Campmeetings, August 3 to 12

Suburban Philadelphia's Largest

CHURCH of the NAZARENE

Staley Ave. and MacDade Blvd.

Collingdale, Pa.

WORSHIP

EVANGELISM

CHRISTIAN EDUCATION

"HOLINESS—OUR WATCHWORD"

Come and See



FRANCIS DANIEL KETNER
Minister

Organizer of the First
E.N.C. PREPARATORY CLUB
January 25, 1945

THE AVENUE ROAD CHURCH OF THE NAZARENE

Avenue Road at Roxborough, Toronto, Ontario

REV. CHAS. B. TEMPLETON, *Minister*

We extend . . .

BEST WISHES

and

CONGRATULATIONS

to the

CLASS OF 1945

"Toronto's Center of Aggressive Evangelism"

CHURCH OF THE NAZARENE

Peabody, Mass.

KENNETH L. AKINS
Pastor

8 Pierpont Street
Phone: 1030

EMMANUEL CHURCH OF THE NAZARENE

470 Smithfield Ave.
Pawtucket, R. I.

HOMER M. SMITH, *Minister*

"The little church with a big message"

The CAMPUS CORNER SHOP

Whether it's bus tickets or tooth powder; books or blotters; stationery or stamps; come to see us first. If you need it and we don't have it, let us try to get it for you. For all your college necessities, shop at the Campus Corner Shop *first*.

Located in Canterbury Hall

Representatives for

J. W. BEINES SPORTING GOODS CO.

and

GREYHOUND LINES

ALBANY DISTRICT
CHURCH OF THE NAZARENE

Rev. Albert M. Babcock, *District Superintendent*

Advisory Board

W. C. MacPHERSON
H. A. PARK
ARTHUR L. OLCOTT
GLENN L. ROGERS

E. N. C. Trustees
ALBERT M. BABCOCK
W. S. MacPHERSON

A
100%
Booster
for
E. N. C.

District Secretary

REV. L. O. TILLOTSON

District Treasurer
ARTHUR L. OLCOTT

W. F. M. S. President
MRS. LOIS E. LANPHER

N. Y. P. S. President
REV. MORRIS E. WILSON

"Speak unto the Children of Israel, that they go forward" Exod. 14: 15

ALBANY'S REVIVAL CHURCH
CHURCH of the NAZARENE

728 Madison Avenue

Albany, New York

Renard D. Smith, *Minister*

Congratulations Class of '45

Wollaston Church of the Nazarene

Twenty-three East Elm Avenue
(College Auditorium)



REV. SAMUEL YOUNG, *Pastor*

Residence: 29 Dunbarton Road

Phone: GRAnite 2140

Sunday Services:

- 9:45 a.m., Sunday School
- 11:00 a.m., Morning Worship
- 6:30 p.m., Young People's Society
- 7:30 p.m., Evangelistic Service

During the Week:

- Wednesday, 7:30 p.m., Prayer and Praise Service
 - First Monday Each Month, 7:45 p.m.,
Women's Foreign Missionary Society
-

SPRINGFIELD GARDENS!

CHURCH OF THE NAZARENE

FARMERS BLVD. and BELT PKWY.

SPRINGFIELD GARDENS, N. Y.



A Spiritual Church

A Friendly Church

A Progressive Church

A Soul Saving Church

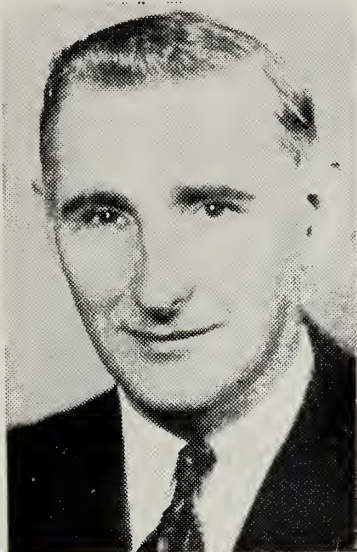
Services

Sunday—Bible School	10.00 A.M.
Morning Worship	11.00 A.M.
N. Y. P. S. Devotional	7.00 P.M.
Evangelistic Service	8.00 P.M.
Wednesday—Prayer Meeting	8.00 P.M.
W. F. M. S. First Wednesday	1.30 P.M.



Pastor
REV. WILLIAM L. STRINGHAM

Residence—179-24 144th Avenue
Springfield Gardens, N. Y.
Phone: Laurelton 8-2857



Pastor
REV. E. R. FERGUSON

**ST. CLAIR
CHURCH OF THE NAZARENE**

1277 St. Clair Avenue West

Toronto, Ontario

GREETINGS

FROM THE CHURCH THAT . . .

- provides half the Ontario Students
- contributes more than any other Ontario church financially
- has the first Ontario E.N.C. graduates
- produced this year's Nautilus Business Manager

"We are for E.N.C. 100 per cent"

**EVERETT
CHURCH OF THE NAZARENE**

10 Church St. (off Everett Sq.)
Everett, Mass.

DR. RALPH EARLE, JR., *Pastor*
6 Cushing Street
Wollaston, Mass.

PREsident 9265

Sunday

9:45 A.M.	Church School
10:45 A.M.	Morning Worship
6:00 P.M.	N. Y. P. S.
7:00 P.M.	Evening Service

Thursday

7:30 P.M. Prayer Meeting

"We Preach Christ Crucified"

CHURCH OF THE NAZARENE

4643 North Fifth Street
Philadelphia, Pa.

REV. PAUL S. COOK
Pastor

Parsonage:
223 W. Ruscomb St.
Philadelphia 20, Pa.

Phone:
MIC 4918



Compliments of our local N.Y.P.S.

QUALITY
MEATS
GROCERIES
BAKED GOODS

ATLAS FOOD MART

1508 Hancock Street
Quincy, Mass.

Courtesy of
MR. LEWIS MATARAZZO

BOSTON MUSIC COMPANY

116 Boylston Street
Boston 16, Mass.

Telephone Order Department
HANcock 1561

"Everything In Music"

**WHAT
Investment Policy
NOW?**

Would you like to check your investment strategy with that of Babson's? If so, clip this advertisement, send it to us with a list of 7 securities you own. We'll tell you whether our strategy is to Hold or Switch. No cost or obligation. Write Dept.

BABSON'S REPORTS

Incorporated
Babson Park 57, Mass.

Bolton - Smart Company, Inc.

Wholesale Purreyors of Choice

BEEF, LAMB, VEAL, PORK, POULTRY, FISH
BUTTER, CHEESE, EGGS AND RELISHES



17-25 South Market Street

Boston, Mass.

Telephone: LAFayette 1900

COMPLIMENTS OF . . .

W. C. LAHUE, INC.

General Contractors
Maintenance Engineers

LOWELL, MASSACHUSETTS

Compliments of

EDWIN S. CARMAN, Inc.

Engineers

CLEVELAND, OHIO

CHURCH'S LAUNDRY SERVICE

624 Hancock Street

Quincy, Mass.

Telephone PResident 7684

"Bring Your Laundry to Church"

DUANE LUMBER COMPANY

600 Southern Artery

Quincy, Mass.

Compliments of

Dole & Bailey, Inc.

ESTABLISHED 1890

M E A T S

19-21-23 New Faneuil Hall Market

BOSTON, MASS.

Shades Screen Porches Venetian Blinds Screens

Eastern Shade & Screen Company

20 John Street

North Quincy 71, Mass.

Telephone PResident 6889

Manufacturers of E-Z-OUT Patented Screens

School Supplies

Refreshments

The Dugout

"A friendly place to trade"

CONGRATULATIONS TO
THE SENIORS OF 1945

Compliments of
FROST COAL & OIL CO.

**HANCOCK
PAINT & VARNISH CO.**

53 West Squantum St.
North Quincy, Mass.

GROSSMAN'S

New England's Largest Building Material Concern

Main Office and Yard

130 Granite Street, Quincy, Mass.

Telephone PRE 7100

TEL. GRA. 0571

Residence: PRE. 6754

HARDING WELDING CO.

Electric and Acetylene Welding
Heaters, Boilers, Machinery, Etc.
Portable Equipment

8 Brooks Ave.

Quincy, Mass.

HOBBY HOUSE

Most Complete Gift Selection
on the South Shore

GREETING CARDS

11 Depot St. (opp. R.R. Station) Quincy



ICE CREAM
131 Eliot St. (at Central Ave.) Milton
(Opp. Railroad Station)
(at Central Avenue)

Ice Cream for Particular People
MADE IN MILTON
Tel. BLUehills 7850

VISIT OUR DAIRY BAR

LINCOLN PHARMACY

ENC's most popular
Drugstore



Finest Watches
and First Class
Repairing

FRANK LAINE
667 Hancock Street
Wollaston, Mass.

Compliments of . . .

FREDERICK MYERS
PRESCRIPTION DRUGGIST
663 Hancock St. Cor. Beale
Wollaston, Mass.
Telephone PRE 7285

WHEN IN NEED OF . . .

Hardware	Packard Paints
Kitchenware	Wall Paper
Garden Supplies	Glass

Call GRANite 0041

J. MacFARLAND & SONS
9 Brook Street Wollaston, Mass.

NOGLER & BLACK CO.

231 Holbrook Road
North Quincy 71, Mass.

Nan's Mayonnaise
Turner's Potato Chips
Good Luck Margarine

. . . School Supplies
. . . Practical Gifts
. . . Stationery
. . . Fountain Pens

SHELDON W. LEWIS
Gift Boxes and Wrappings
49 Beale Street
Wollaston, Mass.

Compliments of . . .

LINCOLN STORES, INC.

Quincy, Mass.

Evangelical Literature ✕ Gifts of Abiding Value

FELLOWSHIP BOOK STORE
It's the hand of.  *fellowship that gives a book.*
9 PARK ST. BOSTON 8, MASS.

GRANite 0392 *Telephones* PRESident 2054

PATTERSON'S FLOWER SHOP

ELSIE M. PATTERSON, *Prop.*

1283 Hancock St. Quincy

In the Long Run

you and your friends will prize the portrait that looks like you—your truest self, free from stage effects and little conceits. It is in this “long run” Photography that PURDY success has been won. Portraiture by the camera that one cannot laugh at or cry over in later years.

For present pleasure and future pride protect your photographic self by having PURDY make the portraits.

160 Tremont Street, Boston

PURDY

OFFICIAL PHOTOGRAPHER

Eastern Nazarene College, Class of 1945

Special Discount Rates to all Students of E. N. C.

MACHINES SOLD ON BUDGET PLAN

**QUINCY TYPEWRITER
SERVICE**

Typewriters - Adding Machines
and Supplies

SOLD - RENTED - REPAIRED

One Maple Street

Quincy, Mass.

Tel. PRE. 6250

Opp. Sheridan's

Compliments of

Pettengill's Jewelry Store

7-11 COTTAGE AVENUE

QUINCY, MASS.

Compliments of . . .

RIVAL FOODS, Inc.

38 HENRY STREET

CAMBRIDGE 39, MASS.

R. GORDON LOTT

Vice President

CONGRATULATIONS

CLASS OF '44

—from—

REMICK'S

Compliments of . . .

SEARS ROEBUCK CO.

Quincy, Mass.

BEST WISHES
TO CLASS OF 1945

Sheridan's
QUINCY'S FASHION CENTER

Compliments of

WEBSTER'S DEPT. STORE

Hancock Street

Quincy, Mass.

SPORTING GOODS



Baseball-Golf-Tennis

Archery - Fishing

Badminton - Softball

Equipment For Every Sport

WM. WESTLAND & CO.

YE DO-NUT SHOPPE

HOT DO-NUTS LUNCHEONETTE

1472 Hancock Street

Quincy, Mass.

Compliments of . . .

UNITED DINERS CO.

24-Hour Service

High Class Food

Wollaston, Mass.

GREETING CARDS

Photographic Supplies

Developing and Printing

WELCH'S

675 Hancock Street

Wollaston

Open Until 7:30 P.M.

We Extend
Our Cordial
and Sincere

BEST
WISHES
TO THE
CLASS
OF 1945

WEYMOUTH GAZETTE PRESS

Printers of the Campus Camera

18-22 Station Street
East Weymouth, Mass.

W. H. BEARD, D.M.D.

1011 Beacon Street

Boston, Mass.

Tel. BEAcon 1563

Compliments of

WM. D. MICHAEL, O.D.

Optometrist

1581 Hancock Street

Quincy, Mass.

EARL STONE, D.M.D.

7 Elm Avenue

Wollaston, Mass.

Tel. LIBerty 6741—6742

RALPH H. WIGHT

PERCY A. WIGHT

Optometrists

Fifty Years on Winter Street
47 Winter St. near Tremont Boston

Office Hours—9:00 a.m. to 5:00 p.m.

Pay and Take Furniture Co.

15 Billings Road

Norfolk Downs, Mass.

ROGER W. MANN

Waterville

Vermont

Real Estate

R

Insurance

N. J. RIGGS & SON

REALTORS

23 Beale St., Wollaston, Mass.

Tel. GRANite 3900

Res. GRANite 7030

Compliments of . . .

DR. SHAW

Wollaston

Massachusetts

Compliments of

QUINT'S FLORISTS

DONAHER'S INC.

Men's Store

1559 Hancock Street

Quincy, Mass.

Compliments of
RALPH W. KEARNS, M.D.
53 Elm Avenue
Wollaston, Mass.

Russell
Funeral Home

TWO FUNERAL HOMES

644 Hancock Street Wollaston
21 Franklin Street South Quincy
GRAnite 7423

Service that Serves and Saves

Established 1913

E. A. ERICKSON

Plumbing
and
Heating

58 Woodbine St. 42 North St.
Wollaston, Mass. Hingham, Mass.

Tel. MAY 3316

Tel. HINGham 0354

YOU ARE WELCOME
at the
Quincy Y.M.C.A.

Special Rates to Students

MOORHEAD'S SHOE STORE
1547 Hancock Street
Quincy

Bostonian Shoes for Men
Enna Jettick Shoes for Women

"A Good Place to Buy Good Shoes"

HOOD'S
MILK

Is served in more
New England Hos-
pitals, Schools and
Institutes than any
other kind.

"NATURE'S FOOD AT ITS BEST"

TOPSY'S CHICKEN COOP
1143 Hancock St., Quincy GRA. 9585

Famous Throughout New England
For its Southern Fried

CHICKEN
and **CHIPS**

Delicious Golden Brown Chicken and Chips

Orders put up to take out

Compliments of

A FRIEND

Congratulations to the Senior Class of 1945

and

A Hearty Welcome to All New Students

SIGMA DELTA ALPHA

E.N.C.'s Friendly Society

Compliments of

THE MILLER PRODUCE COMPANY

FANEUIL HALL

BOSTON 9, MASSACHUSETTS

Compliments of

SIGMA DELTA GAMMA

A spiritual and friendly society
Winner of boys' football and
basketball championship

FORWARD - ONWARD - VICTORY

with the

BETAS OF 1945

NORMA McEDWARD	<i>President</i>
PATRICIA HERRSCHAFT	<i>Vice President</i>
RUTH BASS	<i>Secretary</i>
JEAN THORNE	<i>Treasurer</i>
VERNON CURRY	<i>Chaplain</i>

Knowledge . . .



With an organization of men who know their work in a plant of modern equipment, we are enabled to offer you an efficient service and the highest quality of

**PHOTO-ENGRAVING
IN LINE, HALF-TONE, OR COLOR**

DONOVAN & SULLIVAN ENGRAVING CO.

470 Atlantic Avenue - Boston, Mass.

The Printer . . . ?

We hoped you would ask
this question.

The work was entrusted
to us and our skilled
craftsmen have faithfully
endeavored to carry out
the assignment.



WARREN PRESS

Printers of College Annuals

160 WARREN STREET
BOSTON .. MASSACHUSETTS

Directory

A

Abersold, George P. O. Box 302, Bellaire, Ohio
 Achhammer, Dorothea 136 Willow St., Wollaston, Mass.
 Achhammer, Paul 136 Willow St., Wollaston, Mass.
 Adsit, Doris 168 Bishop Ave., Syracuse, N. Y.
 Aldridge, David 69 Copley St., Wollaston, Mass.
 Allen, Francis 5 Randlet St., Wollaston, Mass.
 Allen, Irene 404 Middle St., New Bedford, Mass.
 Allison, D. Lee Vanderbilt, Pa.
 Amos, Harvey 134 Waterston Ave., Wollaston, Mass.
 Anderson, Esther Smith Ridge Rd., New Canaan, Conn.
 Andrews, George 103 Clayton Ave., Laurel, Del.
 Andrews, Paul 103 Clayton Ave., Laurel, Del.
 Ardrey, William 6 Ebbett Ave., Wollaston, Mass.
 Armstrong, Doris M. C. 28, Warren, Ohio
 Austin, Marie 49 Douglas St., Portland, Me.

B

Balwit, Violet 2301 William St., Schenectady, N. Y.
 Banskere, Harry 23 East Elm Ave., Wollaston, Mass.
 Baroch, Irene R. F. D. 3, Box 316, Bellaire, Ohio
 Bass, Ruth Chestnut St., East Longmeadow, Mass.
 Bastedo, Myrtle R. R. 1, Woodstock, Ontario
 Bee, Ruth 1330 N. Moreland Ave., Cuyahoga Falls, Ohio
 Benson, Eugene 150 Waterston Ave., Wollaston, Mass.
 Benton, James 43 East Elm Ave., Wollaston, Mass.
 Berk, Paul 303 E. Market St., Oringsburg, Pa.
 Best, Marian 218 N. Mercer Rd., New Brighton, Pa.
 Biscoe, Joseph 805 Augusta Ave., Baltimore, Md.
 Bishop, Jane 619 Canton St., Ogdensburg, N. Y.
 Blaugher, Erma 356 Wood St., Terrace, Pa.
 Boggs, Mary Catherine Indian Head, Md.
 Boozell, Bernice 29 East St., New Castle, Pa.
 Bowen, Beulah R. R. 3, Sherbrooke, Quebec
 Bowers, Donna 232 Seabreeze Ave., Palm Beach, Fla.
 Boyd, G. Carl 1132 W. 22nd St., Erie, Pa.
 Boyd, Laura J. Circular Ave., Paoli, Pa.
 Boyd, Ruth 1164 W. 8th St., Erie, Pa.
 Braley, Shirley 578 County St., New Bedford, Mass.
 Brickley, Helen 371 Ford St., Niles, Ohio

Brickley, Sarah 371 Ford St., Niles, Ohio
 Brinker, Luke 222 S. Franklin St., Allentown, Pa.
 Brinkman, Roy 62 State St., New Bedford, Mass.
 Brocksopp, Robert 767 Park Ave., Dunkirk, N. Y.
 Brooks, Barbara Altona, N. Y.
 Brooks, L. Joyce 158 Sheridan Ave., Toronto, Ontario
 Brown, Evelyn 20 Paige St., Owego, N. Y.
 Brown, Louise Hardwick, Vt.
 Brown, Ruth 20 Paige St., Owego, N. Y.
 Brown, Weston 20 Paige St., Owego, N. Y.
 Browne, Agnes 27 Graham St., Gardner, Mass.
 Brunell, Pauline 42 Lynde St., Plattsburg, N. Y.
 Bryner, Dorothy Claysville, R. D. 1, Pa.
 Bunting, Arabella Sanborn Rd., Ashtabula, Ohio
 Burkhart, Marvin R. D. 4, Lancaster, Pa.

C

Cameron, Alberta 2748 E. Colorado, Pasadena 8, Calif.
 Carlson, Marcia 102-6 Remington St., Jamaica, N. Y.
 Carnahan, Roy Route 1, Kent, Ohio
 Carpenter, Ray 26 Payson St., Fitchburg, Mass.
 Carrier, George 51 Sterling St., North Quincy, Mass.
 Charrette, Raymond 385 Bridge Ave., Windsor, Ontario
 Chase, Richard R. D. 4, Ithaca, N. Y.
 Chatfield, Lucile 15 Hayward St., Burlington, Vt.
 Cherdron, Marguerite 14159 Euclid Ave., E. Cleveland, O.
 Chetakian, Nevert 155 6th St., Lowell, Mass.
 Christensen, Betty Altona, N. Y.
 Christensen, Margaret Altona, N. Y.
 Church, Olive R. D. 1, Mogadore, Ohio
 Churchill, Clarence Conneautville, Pa.
 Clark, Paul 423 E. First St., Ulrichsville, Ohio
 Clemans, D. Vaughn Nortonville, N. D.
 Clemons, Luella Sandy Creek, N. Y.
 Clifford, Robert 5658 Des Erables St., Montreal, Quebec
 Cline, Jean 243 Concord St., Portland, Me.
 Cochran, Maude 914 W. Third St., Niles, Ohio
 Cody, Thelma 9 Greenleaf Pl., Melrose, Mass.
 Coffee, Vivian 160 N.W. 32 St., Miami 37, Fla.
 Coffin, Mary 5 Watson St., Salem, Mass.

Colby, Esther 341 Center St., Ashtabula, Ohio
 Cole, C. William Sergeantsville, N. J.
 Collier, Charles 6 Aphthorp St., Johnstown, Pa.
 Collins, Ruth R. F. D. 1, Box 38, Bradford, Pa.
 Congalton, Margaret R. D. 4, Millvale, Pittsburgh, Pa.
 Conser, Helen 44 Alexander St., Princeton, N. J.
 Cooper, Sara R. D. 2, Columbiana, Ohio
 Cornell, May Nichols, N. Y.
 Corrie, Ruth Robertsdale, Pa.
 Crispell, Ralph 698 East 54th St., Brooklyn, N. Y.
 Cross, F. Grant 37 Church St., Weston, Ontario
 Cross, Thora 37 Church St., Weston, Ontario
 Crutcher, Grace Union Hill, Dover, N. J.
 Cubie, Agnes 8 Taft Ave., Haverhill, Mass.
 Cubie, Alexander 18 Sachus St., Wollaston, Mass.
 Cubie, Catherine 8 Taft Ave., Haverhill, Mass.
 Cunningham, Paul R. D. 2, East Liverpool, Ohio
 Curry, Vernon 226 East 26th St. Erie, Pa.
 Custer, Marguerite R. D. 4, Box 30, Johnstown, Pa.
 Cushing, Ralph 93 Franklin Ave., Wollaston, Mass.

D

Davidson, Maxine 15th St., Catlettsburg, Ky.
 Davis, Evelyn 496 White St., Springfield, Mass.
 Davis, Leland 921 Bradshaw Ave., East Liverpool, Ohio
 Deans, Lucille 499 Shawmut Ave., Boston, Mass.
 Dell, Edward 2400 S.W. 24th St., Miami, Fla.
 Dell, Jack 2400 S.W. 24th St., Miami, Fla.
 Delp, George 224 Aspinwall Ave., Boston, Mass.
 Desjardine, Millie Dashwood, Ontario
 DeVaul, Beatrice R. F. D. 2, Canastota, N. Y.
 Dickinson, Harriett Venice Center, N. Y.
 Dickinson, Margaret Venice Center, N. Y.
 Dickson, Betty 198 Fair Oaks Pk., Needham, Mass.
 Dickson, DeWitt 66 Grand Ave., Freeport, N. Y.
 Dittrich, Gloria 231 Pennsylvania Ave., Paterson, N. J.
 Dixon, Esther 1830 4th St., New Brighton, Pa.
 Dixon, Wallace 2801 Bayonne Ave., Baltimore, Md.
 Dodd, Elsie Adene, Ohio
 Domingues, Frank 95 Jenny St., New Bedford, Mass.
 Dorothy, Jean Childwold, N. Y.
 Douglas, Pauline 4 Genesee Ave., Binghamton, N. Y.
 Doverspike, Viola R. 3, Mayport, Pa.
 Dunlap, Margaret Hanover Hgts., R. D. 1, Pottertown, Pa.

E

Eastman, Leora 309 Picton Ave., Ottawa, Ontario
 Eckmeyer, William 62 Sachus St., Wollaston, Mass.
 Elliot, Pauline 2814 Georgia Ave., Baltimore, Md.
 Emery, Eleanor 25 Franklin St., Warren, Pa.
 Emmel, Robert 360 Stonycreek St., Johnstown, Pa.
 Eshleman, Viola 312 Highland Ave., Downingtown, Pa.
 Ewing, Mary Jane R. D. 1, Polk, Pa.
 Ewing, Margaret R. D. 1, Polk, Pa.

F

Falke, Helen Lacona, N. Y.
 Fallon, Arthur 77 Upham St., Melrose, Mass.
 Feiten, Norma 4107 Emerson St., Hyattsville, Md.
 Feurtado, William 75 Hobart St., Wollaston, Mass.
 Finch, Catherine Denver, N. Y.
 Flueck, Marion 1861 Havden Ave., East Cleveland, Ohio
 Foster, Lois 240 Pine St., Wollaston, Mass.
 Freeh, Florence 116-38 135th St., S. Ozone Park, N. Y.
 Freese, Donald 3849 Central Ave., Shadyside, Ohio
 Friend, Esther Acosta, Pa.
 Fullerton, Betty 1121 East 35th St., Erie, Pa.

G

Galbraith, Dale 333 Indiana Ave., McDonald, Ohio
 Gale, Irma 15 Endicott St., Pittsfield, Mass.
 George, Alice 73 South Broadway, Pennsville, N. J.
 Giuliano, Merlva Groveville Park, Beacon, N. Y.
 Goodnow, Robert 5 Ridgeway St., Wollaston, Mass.
 Goresch, John 138 Gautier St., Johnstown, Pa.
 Gould, Harold 237 Talbot Ave., Dorchester Center, Mass.
 Gracey, Betty Robertsdale, Pa.
 Graffam, Wilbert 20 Chapel St., Central Falls, R. I.
 Graham, Ruth 94 Russell St., Manchester, Conn.
 Gray, Merle R. D. 3, Box 128, Warren, Pa.
 Greene, Barbara 77 Russell St., Bath, Me.
 Greene, Virginia 625 25th St., South Arlington, Va.
 Grosse, Eunice 3311 Gainesville St., S.E., Washington, D. C.

H

Hall, Elaine Box 14, North Fryeburg, Me.
 Ham, Laverne R. R. 3, Shoals, Ind.
 Hamel, Emeline 52 Keeley St., Haverhill, Mass.
 Hamilton, June 60 Willet St., Wollaston, Mass.

Mason, Alfred 73 Fenno St., Wollaston, Mass.
 Mason, Beryl 73 Fenno St., Wollaston, Mass.
 Mason, Myrtle 288 Prospect St., Cambridge, Mass.
 Matthews, Joy 39 Mt. Joy Ave., Freeport, L. I., N. Y.
 Matthews, Victor 39 Mt. Joy Ave., Freeport, L. I., N. Y.
 Mauger, Katherine R. D. 5, West Chester, Pa.
 May, Golden Moultonville, N. H.
 Maybury, John Box 317, Bristol, Pa.
 McCusker, Doris 4402 Dension Ave., Cleveland, Ohio
 McEdward, Norma Concord, Vt.
 McElhenny, Anna 11 Rhodes Ave., Collingdale, Pa.
 McElwee, Sue 106 Appleton St., Lowell, Mass.
 McIlwain, Gladys 218 Josephine Ave., Windsor, Ontario
 McKee, Kenneth 19 Washington St., E. Walpole, Mass.
 McKeel, Mary 21 Fox St., Owego, N. Y.
 McKenney, Pearl 58 School St., Danielson, Conn.
 McKinney, Kathryn R. F. D. 1, West Chazy, N. Y.
 McKittrick, Freda 306½ Marion St., Marietta, Ohio
 Mellinger, Mary 23 East Elm Ave., Wollaston, Mass.
 Melnick, Mary Auburn Rd., Pennsville, N. J.
 Michaels, Alice R. D. 7, Mercer, Pa.
 Minott, Theodore 50 Lawrence St., Danvers, Mass.
 Mitchell, Donald 73 Sladen St., Dracut, Mass.
 Mitchell, Florence 4 Granville Ave., Danbury, Conn.
 Mobberly, Bernadine 537 Madison Ave., Cambridge, Ohio
 Moore, Lawrence 134 Old Colony Ave., Wollaston, Mass.
 Moore, J. Malcolm 438 Washington St., Bath, Me.
 Moore, Paul 5421 N. Lawrence St., Philadelphia, Pa.
 Morris, Hilda 48 Fairview St., Bethlehem, Pa.
 Mundy, Phyllis 35 Chicago Ave., Youngstown, Ohio
 Musnug, Vivian Star Route, Scottdale, Pa.
 Muxworthy, Charles 153½ Coleman Ave., Toronto, Ont.

N

Naylor, Jean 97 Willow St., Wollaston, Mass.
 Nesmith, Jean R. D. 1, Vestal, N. Y.
 Newton, Helen 1118 Midland Ave., Syracuse, N. Y.
 Newton, Naomi 802 North St., Endicott, N. Y.
 Norris, Lillian Huntingdon, Pa.
 Northcott, Laura 90 Humber Blvd., Toronto, Ontario

O

O'Dell, Elwood 9 Landers Rd., Wollaston, Mass.
 Olson, Dorothy 61 Bromfield St., Wollaston, Mass.
 Olson, Howard 61 Bromfield St., Wollaston, Mass.

P

Palmer, Vera R. F. D. 1, Skowhegan, Me.
 Pangle, Peggy 5422 Nevada Ave., N.W., Washington, D. C.
 Park, Irene Washington Blvd., North Bellmore, N. Y.
 Park, Martha Washington Blvd., North Bellmore, N. Y.
 Park, Miriam Washington Blvd., North Bellmore, N. Y.
 Parker, Elizabeth Box 544, Linesville, Pa.
 Parks, Lucille 207 S. Fifth St., Allentown, Pa.
 Parry, Harold 1135 Linden St., Allentown, Pa.
 Patton, Jay 73 Franklin Ave., Wollaston, Mass.
 Patton, Ruth 73 Franklin Ave., Wollaston, Mass.
 Payne, Dana 57 Courier Blvd., Kenmore, N. Y.
 Pennington, Luther 18 Glen St., Rensselaer, N. Y.
 Pennypacker, Wilbur 1122 Cambridge St., Camden, N. J.
 Perry, Janice 525 W. Glenaven, Youngstown, Ohio
 Pettitt, Elva 637 Norway Ave., Trenton, N. J.
 Plant, Irene Jerome, Pa.
 Plyler, Harriet 455 Douglas St., Akron, Ohio
 Pollard, Shirley 209 South Park St., Canastota, N. Y.
 Prouse, Rowland 105 Naylor St., Salisbury, Md.

R

Randall, Frank 107 Norfolk St., Cambridge, Mass.
 Rapalje, Robert Marion, Va.
 Rapisarda, Frank 11 Bethel St., Springfield, Mass.
 Rearick, Erman R. D. 2, Sharpsville, Pa.
 Reed, Donald 314 Ridgeway Ave., East Liverpool, Ohio
 Reed, Dorothy 314 Ridgeway Ave., East Liverpool, Ohio
 Rice, Budd R. D. 1, Franklin, Pa.
 Rice, Gene R. D. 1, Franklin, Pa.
 Rice, George 9 Landers Rd., Wollaston, Mass.
 Rich, Albert Box 114, Livermore Falls, Me.
 Richardson, Allen 11 Landers Rd., Wollaston, Mass.
 Richey, Betty 2718 Idlewood Ave., Youngstown, Ohio
 Richey, Myron 2718 Idlewood Ave., Youngstown, Ohio
 Riley, Sophie 694 East 24th St., Paterson, N. J.
 Roberts, Cuba 160 N. Broughton St., Sherman, Texas
 Rogers, Frances 198 East North St., Illion, N. Y.
 Rosenhammer, Rita 22 Hawthorne Ave., Bellmore, N. Y.
 Ross, Myra Robertsdale, Pa.
 Russell, Robert 1233 Hamlin Dr., Astabula, Ohio

S

Salvia, Rose Marie 951 Ash St., Johnstown, Pa.
 Sawyer, Robert 306 Dennison Ave., Akron, Ohio

- Schubert, Kenneth 1135 Linden St., Allentown, Pa.
 Scott, Eileen Hegner Hollow Rd., Lisbon, Ohio
 Scott, John 4 Woodberry St., Gloucester, Mass.
 Scott, John D. Valley Camp St., Warren, Ohio
 Seitz, Arlene West Point, Pa.
 Sharpe, Mary Bass River, Nova Scotia
 Shedd, Dorothy 75 Carlisle St., East Chelmsford, Mass.
 Shields, Mary 28 Newton Ave., Wollaston, Mass.
 Shoff, Louise Phalanx Station, Ohio
 Shollenberger, Vivian 207 North Irwine St., Warren, Ohio
 Shuman, Thelma 834 Melrose Ave., Trenton, N. J.
 Sickler, Ruth 177 Richmond St., Brooklyn, N. Y.
 Simmons, Nancy 18½ N. Hampton St., Worcester, Mass.
 Simms, Vera Glencoe, Ohio
 Slick, Roy 25 Gross St., Pittsburgh, Pa.
 Slocum, Donald 115½ Sycamore St., New Bedford, Mass.
 Smith, Astrid 28 Ebbett Ave., Wollaston, Mass.
 Smith, Elizabeth R. F. D. 2, Waterville, Me.
 Smith, Ernest 28 Ebbett Ave., Wollaston, Mass.
 Smith, Homer 507 Power Rd., Pawtucket, R. I.
 Smith, Janet Route 1, Belle Vernon, Pa.
 Smith, Keith R. F. D. 2, Waterville, Me.
 Smith, Rolland Box 134, Bunola, Pa.
 Snearley, Pauline 523 Anckey Ave., Somerset, Pa.
 Snowden, Charlotte 107 Harvard Ave., W. Medford, Mass.
 Sprow, Estella 1405 Fifth St., New Brighton, Pa.
 Stairs, Conard Meductic, New Brunswick
 Stanford, Roland Box 319, Windsor, Nova Scotia
 Stanley, Gordon 76 Russell St., Bath, Me.
 Staten, Leona Box 28, Bergholz, Ohio
 Steiner, Helen 900 Stratford Ave., Barberton, Ohio
 Stemm, Donnabelle 61 East Elm Ave., Wollaston, Mass.
 Stemm, Vesy 61 East Elm Ave., Wollaston, Mass.
 Stewart, Margaret 38 Groton Rd., N. Chelmsford, Mass.
 Stiles, Marilyn Altona, N. Y.
 Stone, Betty 1011 K St., Washington, D. C.
 Storms, Victor 21 West St., Everett, Mass.
 Sturtevant, Leroy Milo, Me.
 Summerscales, William 43 Lotteridge Ave., N. Hamilton, Ontario
 Sumner, Mary Box 11, R. D. 1, Oxford, Pa.
 Sunberg, Eleanor R. D. 2, Butler, Pa.
 Swenk, Alma 123 Rhodes Ave., Collingdale, Pa.
- T
- Talley, Joseph 37 Summer St., Brockton, Mass.
 Taylor, Lila Third St., Wadsworth, Ohio
- Taylor, William 15 Orchard St., Wharton, N. J.
 Teague, Louise Waldoboro, Me.
 Temple, Helen 80 Pond St., Hopkinton, Mass.
 Terwilliger, Eugene 215 Williams Ave., Hasbrouck Heights, N. J.
 Thomas, Edward Landers Rd., Wollaston, Mass.
 Thomas, Olga 226 W. 41st St., Shadyside, Ohio
 Thorne, Jean 518 Ohio Ave., Salem, Ohio
 Thorp, Juanita South Woodbury, Vt.
 Thurber, Everest West Chazy, N. Y.
 Thurber, Harold West Chazy, N. Y.
 Tidball, Dove 45 Hunt St., North Quincy, Mass.
 Tidball, Seth 45 Hunt St., North Quincy, Mass.
 Tracy, Harvey West Jonesport, Me.
 Traverse, Dolores 6 Dickerman Lane, Braintree, Mass.
 Trimbath, Anna 311 Pobelles St., Pittsburgh, Pa.
 Tullis, Mildred 29 W. Pershing Ave., Salem, Ohio
 Turkington, Marion 23 Orchard St., Manchester, Conn.
 Turner, Betty Leesburg, Va.
 Turpel, Ethel 161 Essex St., Saugus, Mass.
 Tustin, Mabel 280 Konnan Ave., Washington, Pa.
- U
- Umstead, Grace 450 Washington St., Royersford, Pa.
 Unterzuber, Alice 12 Berlin St., Wollaston, Mass.
 Utter, Robert Berkshire Rd., Wharton, N. J.
- V
- Van Dressar, Irene 49 Walton St., Alexandria Bay, N. Y.
- W
- Wachtel, Alexander 137 Greenkill Ave., Kingston, N. Y.
 Ward, Audrey 216 Hatt St., Dundas, Ontario
 Washburn, Alma 56 Maywood St., Worcester, Mass.
 Weaver, Erlaine 405 Vienna Ave., Niles, Ohio
 Webster, Louise 51 Hale St., Beverly, Mass.
 Wells, Dorothy 92 Gilford Ave., Laconia, N. H.
 Wendell, Wilfred 1205 Palmetto Ave., Akron, Ohio
 West, Julia 3763 South Union, Tulsa, Okla.
 West, Margie 3763 South Union, Tulsa, Okla.
 Whetstone, Cornelius 822 Penn St., Bethlehem, Pa.
 White, Grace 32 Burnside St., Providence, R. I.
 Widowsky, Betty 583 Schiller Ave., Akron, Ohio
 Wild, Everett 1137 Smithfield Ave., Saylesville, R. I.

Williams, Oliver
Willwerth, Irene
Wilson, Ruth
Wolfe, George
Wood, Jean
Wool, Glenna
Wooledge, Emma

Sandy Creek, N. Y.
Box 182, Union City, Pa.
Chazy, N. Y.
32 Sandwich Rd., Wareham, Mass.
273 Huron St., Barberton, Ohio
20 Latham Ct., Burlington, Vt.
Black River, N. Y.

Wormhood, Christine
Wright, Austin
Wright, Florence
Yamada, Paul

North Baldwin, Me.
56 Tirrell St., Quincy, Mass.
R. D. 1, Poland, Ohio

Y

Pepeekeo, Hawaii





